

ELEMENTS OF EXTERNAL SCAN (Revised 2-18-11)

Geography

Bakersfield College

The Kern Community College District has three community colleges within its jurisdiction. These three colleges cover five California counties: Kern, Inyo, Mono, Tulare, and San Bernardino.

The ***Bakersfield College Service Area*** includes the following zip codes/cities from within Kern county: 93203 (Arvin); 93206 (Buttonwillow); 93225 (Frazier Park); 93226 (Glennville); 93241 (Lamont); 93243 (Lebec); 93263 (Shafter); 93287 (Woody); and 93301, 93302, 93303, 93304, 93305, 93306, 93307, 93308, 93309, 93311, 93312, 93313, 93314, 93380, 93383, 93384, 93385, 93386, 93387, 93388, 93389, and 93390 (All Bakersfield).

The ***Bakersfield College Labor Market Area*** includes all of the areas above plus the following zip codes/cities from Kern county: 93205 (Bodfish); 93215 and 93216 (Delano); 93220 (Edison); 93222 (Pine Mountain Club); 93224 (Fellows); 93238 (Kernville); 93240 (Lake Isabella); 93249 (Lost Hills); 93250 (McFarland); 93251 (McKittrick); 93252 (Maricopa); 93255 (Onyx); 93268 (Taft); 93276 (Tupman); 93280 (Wasco); 93283 (Weldon); 93285 (Wofford Heights); 93501 (Mojave); 93504 and 93505 (California City); 93516 (Boron); 93518 (Caliente); 93519 (Cantil); 93523 and 93524 (Edwards); 93527 (Inyokern); 93528 (Johannesburg); 93531 (Keene); 93554 (Randsburg); 93555 and 93556 (Ridgecrest); and 93558 (Red Mountain).

Cerro Coso Community College

The ***Cerro Coso College Service Area*** includes the following zip codes/cities from within the Kern, Inyo, and Mono counties: 92328 (Death Valley in Inyo county); 92384 (Shoshone in Inyo county); 92389 (Tecopa in Inyo county); 93205 (Bodfish in Kern county); 93238 (Kernville in Kern county); 93240 (Lake Isabella in Kern county); 93255 (Onyx in Kern county); 93283 (Weldon in Kern county); 93285 (Wofford Heights in Kern county); 93502 and 93502 (Mojave in Kern county); 93504 and 93505 (California City in Kern county); 93513 (Big Pine in Inyo county); 93514 and 93515 (Bishop in Inyo county); 93516 (Boron in Kern county); 93522 (Darwin in Inyo county); 93523 and 93524 (Edwards in Kern county); 93526 (Independence in Inyo county); 93529 (June Lake in Mono county); 93530 (Keeler in Inyo county); 93545 (Lone Pine in Inyo county); 93546 (Mammoth Lakes in Mono county); 93549 (Olancho in Inyo county); and 93555 and 93556 (Ridgecrest in Kern county).

The ***Cerro Coso Labor Market Area*** includes all of the areas above plus the following zip code/cities: 93226 (Glennville in Kern county); 93512 (Benton in Mono county); 93517 (Bridgeport in Mono county); 93527 (Inyokern in Kern county); 93528 (Johannesburg in Kern county); 93541 (Lee Vining in Mono county); 93542 (Little Lake in Inyo county); 93554 (Randsburg in Kern county); 93560 (Rosamond in Kern county); 93562 (Trona in San Bernardino county); 93596 (Boron in Kern county); 96107 (Coleville in Mono county); and 96133 (Topaz in Mono county).

Porterville College

The ***Porterville College Service Area*** includes the following zip codes/cities from within Tulare county: 93207 (California Hot Springs); 93208 (Camp Nelson); 93218 (Ducor); 93257 and 93258 (Porterville); 93260 (Posey); 93261 (Richgrove); 93265 (Springville); 93267 (Strathmore); and 93270 (Terra Bella).

The **Porterville College Labor Market Area** includes the areas above plus the following zip codes/cities: 93201 (Alpaugh in Tulare county); 93215 and 93216 (Delano in Kern county); 93219 (Earlimart in Tulare county); 93221 (Exeter in Tulare county); 93223 (Farmersville in Tulare county); 93227 (Goshen in Tulare county); 93235 (Ivanhoe in Tulare county); 93244 (Lemon Cove in Tulare county); 93247 (Lindsay in Tulare county); 93249 (Lost Hills in Kern county); 93250 (McFarland in Kern county); 93256 (Pixley in Tulare county); 93261 (Richgrove in Tulare county); 93262 (Sequoia National Park in Tulare county); 93265 (Springville in Tulare county); 93267 (Strathmore in Tulare county); 93270 (Terra Bella in Tulare county); 93271 (Three Rivers in Tulare county); 93272 (Tipton in Tulare county); 93274 and 93275 (Tulare in Tulare county); 93277, 93278, 93279, 93290, 93291, and 93292 (Visalia in Tulare county); 93280 (Wasco in Kern county); 93286 (Woodlake in Tulare county); 93603 (Badger in Tulare county); 93615 (Cutler in Tulare county); 93618 (Dinuba in Tulare county); 93633 (Kings Canyon National Park in Tulare county); 93647 (Orosi in Tulare county); 93666 (Sultana in Tulare county); 93670 (Yetttem in Tulare county); and 93673 (Traver in Tulare county).

Methodology

Data for this report were obtained from Economic Modeling Specialists, Inc. (EMSI) and the U.S. Census Bureau American Fact Finder. Data from EMSI is current and projected. Data from the Census Bureau is based on the 2000 Census and uses that to project through 2009. Where possible data are reported by individual College Service Area or Labor Market Area. Where that is not possible, data are reported by County. Occupation data are run by Labor Market area as opposed to Service Area because it is presupposed that individuals are more willing to commute to areas outside of the service area when looking for work.

Service Area Characteristics

Population

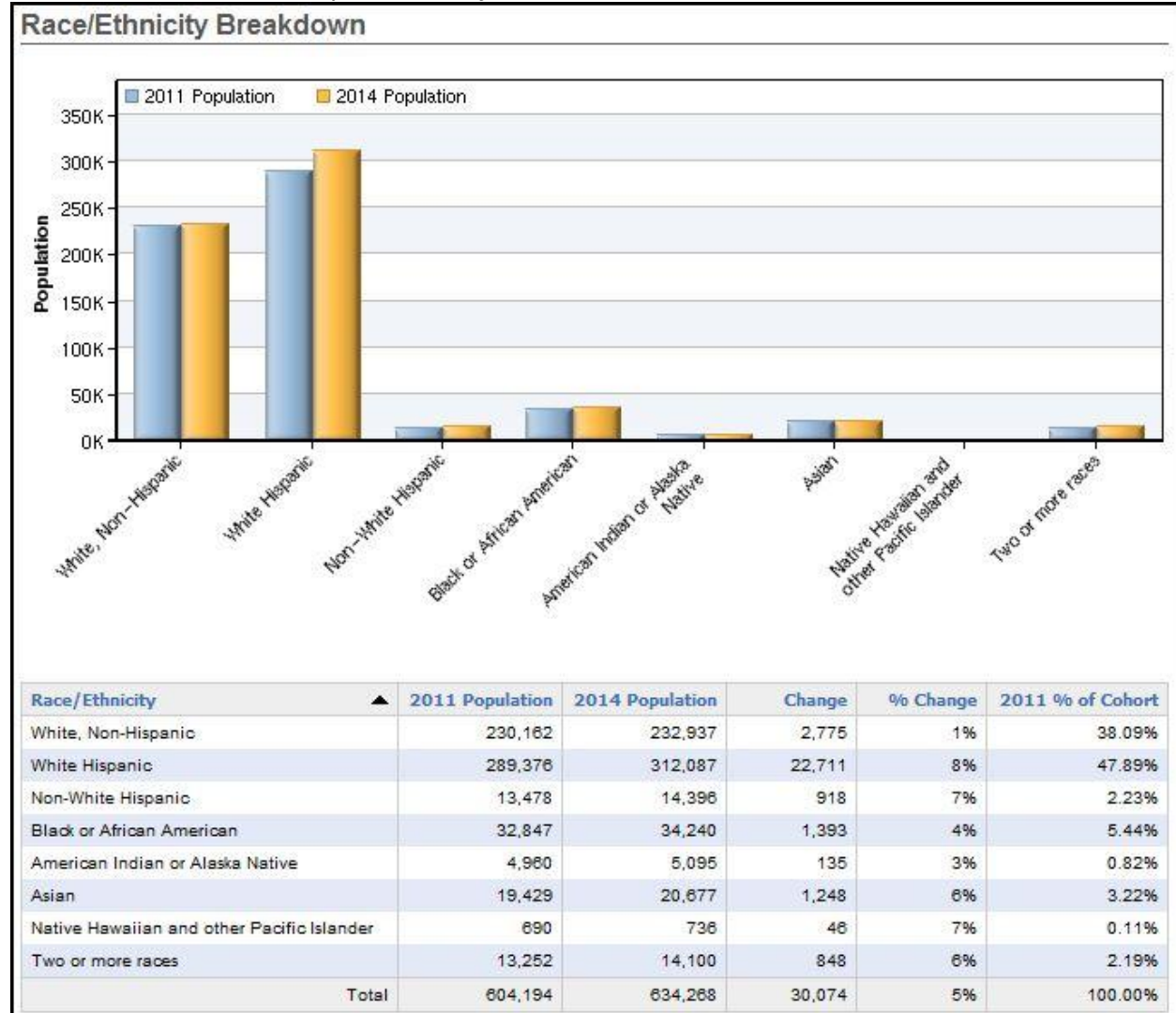
2011 and 2014 Population Statistics for the BC, CC and PC Service Areas.

Service Area	2011 Population	2014 Population	Change	% Change
Bakersfield College	604,194	634,268	30,074	5%
Cerro Coso Community College	97,933	98,522	589	1%
Porterville College	104,337	106,610	2,273	2%
TOTAL (KCCD Service Area)	806,464	839,400	32,936	4%

Source: EMSI – 4th Quarter 2010

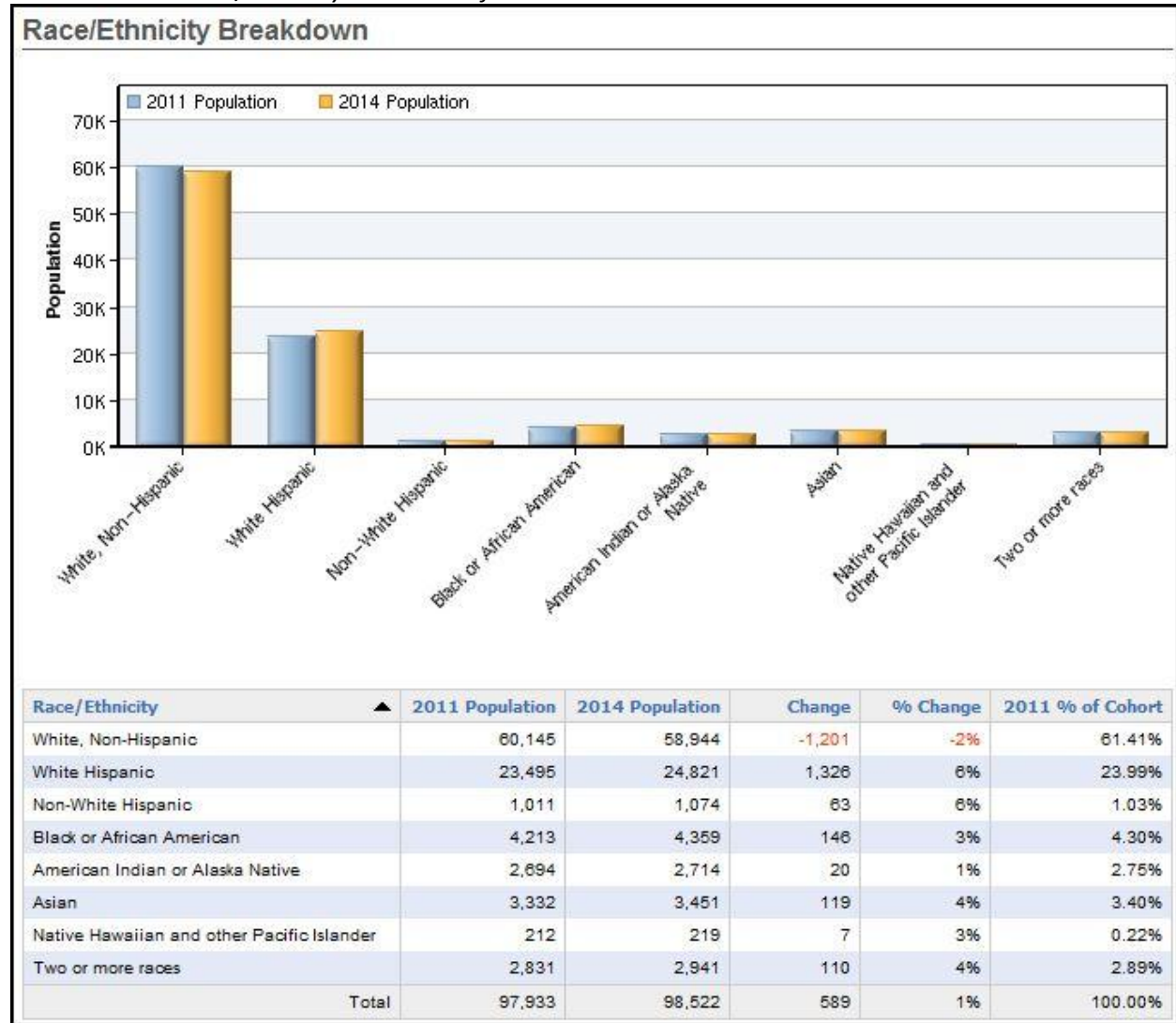
Race/Ethnicity

2011 and 2014 Race/Ethnicity Breakdown for the BC Service Area



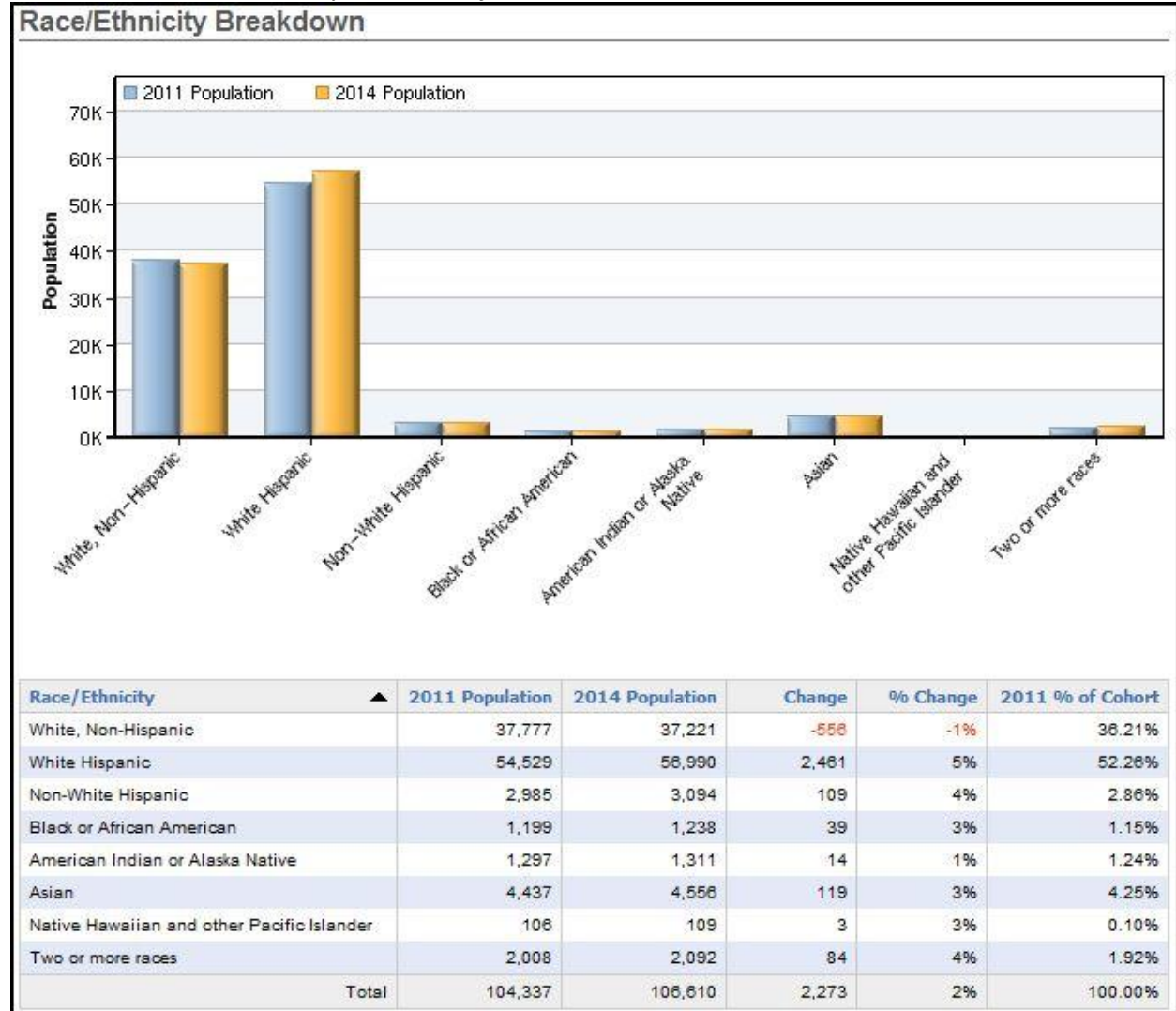
Source: EMSI – 4th Quarter 2010

2011 and 2014 Race/Ethnicity Breakdown for the CC Service Area



Source: EMSI – 4th Quarter 2010

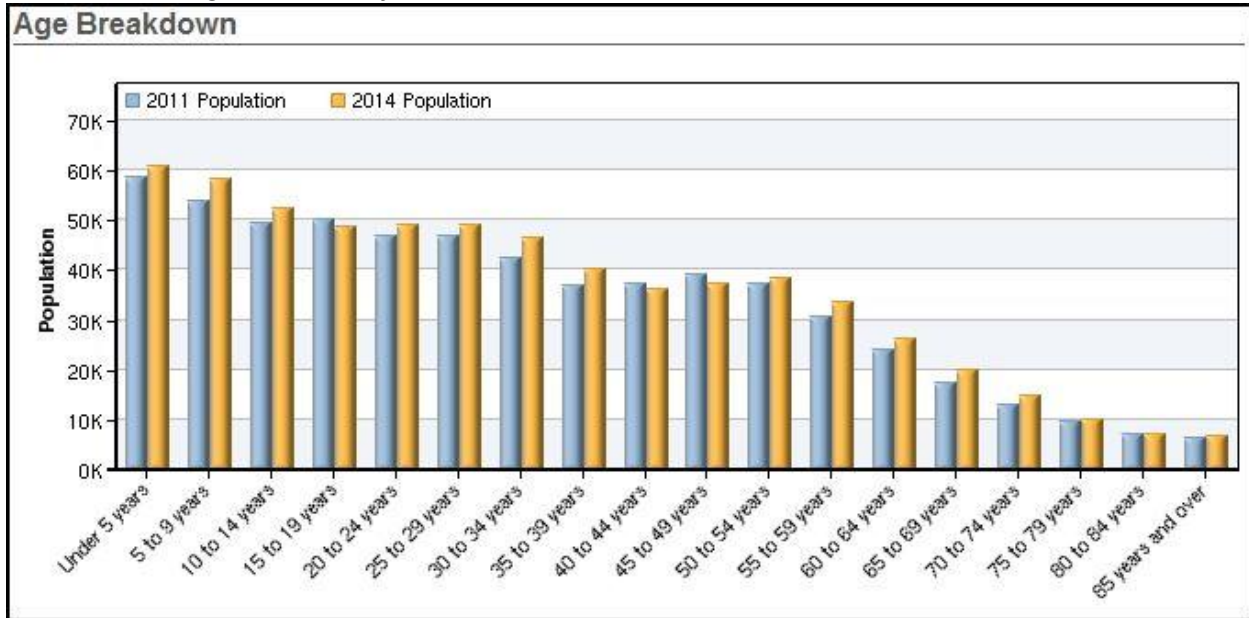
2011 and 2014 Race/Ethnicity Breakdown for the PC Service Area



Source: EMSI – 4th Quarter 2010

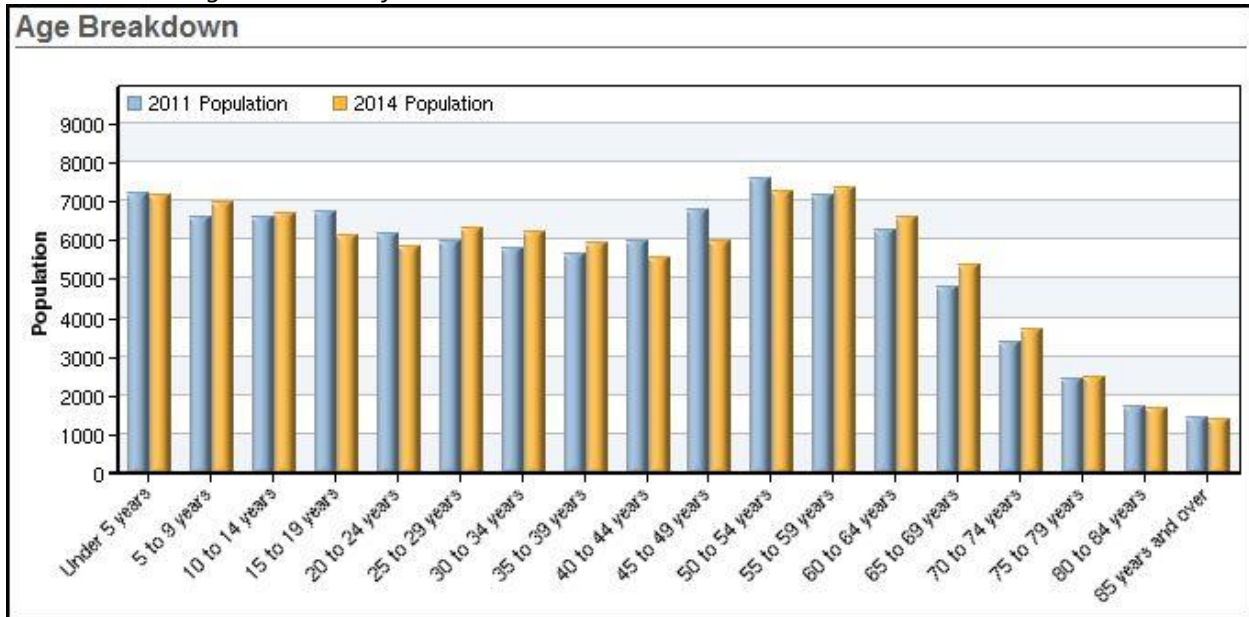
Age

2011 and 2014 Age Breakdown for the BC Service Area.



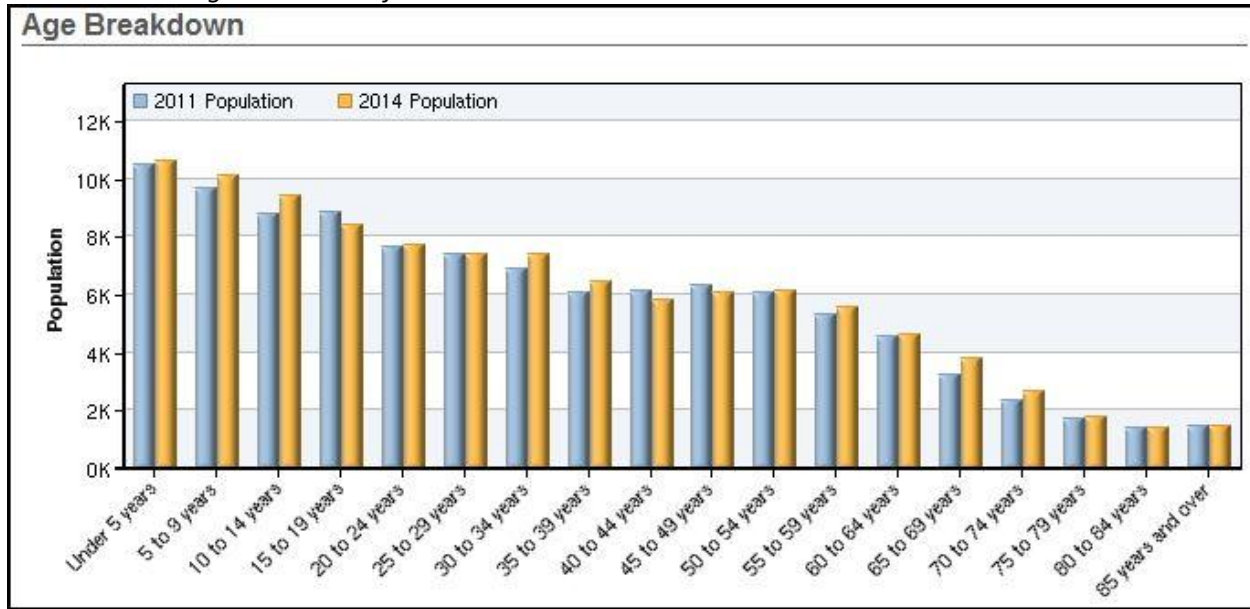
Source: EMSI – 4th Quarter 2010

2011 and 2014 Age Breakdown for the CC Service Area.



Source: EMSI – 4th Quarter 2010

2011 and 2014 Age Breakdown for the PC Service Area.



Source: EMSI – 4th Quarter 2010

Gender

2011 and 2014 Gender Breakdown for the BC, CC and PC Service Areas.

Service Area & Gender		2011 Population	2011 % Pop	2014 Population	2014 % Pop	Change	% Change
BC Service Area	Males	303,645	50.3%	319,420	50.4%	15,775	5%
	Females	300,549	49.7%	314,849	49.6%	14,300	5%
CC Service Area	Males	50,220	51.3%	50,639	51.4%	419	1%
	Females	47,713	48.7%	47,883	48.6%	170	0%
PC Service Area	Males	52,677	50.5%	53,886	50.5%	1,209	2%
	Females	51,660	49.5%	52,724	49.5%	1,064	2%

Source: EMSI – 4th Quarter 2010

Educational Attainment

2011 Educational Attainment for Population 25 and older in Kern, Tulare, Inyo, and Mono Counties.

County	Education Level	2011 Population	% of Population
Kern County	Less than 9 th Grade	65,535	13%
	9 th Grade to 12 th Grade	62,541	13%
	High School Diploma	141,114	28%
	Some College	109,428	22%
	Associate's Degree	37,194	8%
	Bachelor's Degree	51,912	11%
	Graduate Degree and Higher	24,636	5%
Tulare County	Less than 9 th Grade	47,848	19%
	9 th Grade to 12 th Grade	25,969	10%
	High School Diploma	67,874	27%
	Some College	55,023	22%
	Associate's Degree	20,893	8%
	Bachelor's Degree	24,932	10%
	Graduate Degree and Higher	10,387	4%
Inyo & Mono Counties	Less than 9 th Grade	985	5%
	9 th Grade to 12 th Grade	1,957	9%
	High School Diploma	8,597	40%
	Some College	6,357	30%
	Associate's Degree	1,910	9%
	Bachelor's Degree	1,158	5%
	Graduate Degree and Higher	341	2%

Source: EMSI – 4th Quarter 2010

Foreign Born, Language Other Than English Spoken at Home and Median Household Income

The most recently available data to answer questions about foreign born, language spoken at home and income are derived from the U.S. Census Bureau, American Fact Finder and reflect the 2000 Census.

Social & Economic Characteristics by County

County	Foreign Born		Language Other Than English Spoken at Home		Median Household Income (1999 dollars)
	Number	Percent	Number	Percent	
Inyo	1,367	7.6%	2,002	11.8%	\$35,006
Kern	111,944	16.9%	202,394	33.4%	\$35,446
Mono	1,598	12.4%	2,104	17.4%	\$44,992
Tulare	83,124	22.6%	146,859	43.8%	\$33,983

Source: U.S. Census Bureau, Summary File 1 (SF1) and Summary File 3 (SF3)

Occupations with the Greatest Number of Openings

Occupations with the Greatest Number of Openings in the BC Labor Market Area.

Occupation	2011 Jobs	2014 Jobs	Change	% Change	Openings	Annual Openings
Miscellaneous agricultural workers	31,578	33,774	2,196	7%	5,056	1,685
Child care workers	7,944	8,632	688	9%	1,357	452
Cashiers, except gaming	6,477	6,768	291	4%	1,150	383
Retail salespersons	7,340	7,799	459	6%	1,061	354
Truck drivers, heavy and tractor-trailer	7,012	7,679	667	10%	1,030	343
Combined food preparation and serving workers, including fast food	5,405	5,893	488	9%	820	273

Source: EMSI – 4th Quarter 2010

Occupations with the Greatest Number of Openings in the CC Labor Market Area.

Occupation	2011 Jobs	2014 Jobs	Change	% Change	Openings	Annual Openings
Cashiers, except gaming	1,316	1,364	48	4%	228	76
Correctional officers and jailers	1,171	1,295	124	11%	199	66
Waiters and waitresses	957	999	42	4%	198	66
Child care workers	1,211	1,305	94	8%	197	66
Retail salespersons	984	1,048	64	7%	146	49
Maids and housekeeping cleaners	1,113	1,188	75	7%	133	44

Source: EMSI – 4th Quarter 2010

Occupations with the Greatest Number of Openings in the PC Labor Market Area.

Occupation	2011 Jobs	2014 Jobs	Change	% Change	Openings	Annual Openings
Miscellaneous agricultural workers	28,649	28,743	94	0%	2,791	930
Child care workers	4,373	4,911	538	12%	900	300
Retail salespersons	5,065	5,395	330	7%	743	248
Cashiers, except gaming	3,720	3,840	120	3%	618	206
Truck drivers, heavy and tractor-trailer	3,212	3,452	240	7%	412	137
Combined food preparation and serving workers, including fast food	2,960	3,148	188	6%	371	124

Source: EMSI – 4th Quarter 2010

Occupations with the Greatest Number of Openings Requiring Postsecondary Education or Greater

Occupations with the Greatest Number of Openings in the BC Labor Market Area.

Occupation	2011 Jobs	2014 Jobs	Change	% Change	Openings	Annual Openings	Education Level
Real estate sales agents	4,307	4,859	522	13%	752	251	Postsecondary voc. award
Elem. school teachers, except special ed.	5,910	6,197	287	5%	681	227	Bachelor's degree
Property, real estate, and community association managers	3,96	3,473	377	12%	528	176	Bachelor's degree
Registered nurses	3,302	3,573	271	8%	439	146	Associate's degree
General and operations managers	3,145	3,217	72	2%	350	117	Degree plus work exp.
Management analysts	1,775	1,991	216	12%	303	101	Degree plus work exp.

Source: EMSI – 4th Quarter 2010

Occupations with the Greatest Number of Openings in the CC Labor Market Area.

Occupation	2011 Jobs	2014 Jobs	Change	% Change	Openings	Annual Openings	Education Level
Real estate sales agents	738	816	78	11%	113	38	Postsecondary voc. award
Elem. school teachers, except special ed.	705	741	36	5%	83	28	Bachelor's degree
Business operation specialists, all other	788	811	23	3%	77	26	Bachelor's degree
Property, real estate, and community association managers	447	494	47	11%	69	23	Bachelor's degree
General and operations managers	533	549	16	3%	64	21	Degree plus work exp.
Registered nurses	582	611	29	5%	59	20	Associate's Degree

Source: EMSI – 4th Quarter 2010

Occupations with the Greatest Number of Openings in the PC Labor Market Area.

Occupation	2011 Jobs	2014 Jobs	Change	% Change	Openings	Annual Openings	Education Level
Elem. school teachers, except special ed.	2,821	2,999	178	6%	365	122	Bachelor's degree
Real estate sales agents	2,173	2,406	233	11%	336	112	Postsecondary voc. Award
Secondary school teachers, except special and vocational ed.	2,458	2,569	111	5%	320	107	Bachelor's degree
Registered nurses	2,631	2,782	151	6%	286	95	Associate's degree
Property, real estate, and community association managers	1,505	1,658	153	10%	228	76	Bachelor's degree
Farm, ranch, and other agricultural managers	3,168	2,976	-192	-6%	199	66	Degree plus work exp.

Source: EMSI – 4th Quarter 2010

Major Employers

Top Regional Businesses in the BC Labor Market Area.

Description	Business Name	Local Employees
Crop and animal production	Sun Pacific Farming	3,000
Wholesale Trade Agents and Brokers	Bolthouse Farms	2,500
Wholesale Trade Agents and Brokers	Grimmway Farms	2,000
General Medical and Surgical Hospitals	Mercy Hospital	1,500
General Medical and Surgical Hospitals	Kern Medical Center	1,300
Office Administrative Services	State Farm Insurance	1,300
Elementary and Secondary Schools	Kern County Superintendent of Schools Office	1,200
Support Activities for Oil and Gas operations	Nabors Well Services Company	1,200
General Medical and Surgical Hospitals	Bakersfield Memorial Hospital	1,000
General Medical and Surgical Hospitals	San Joaquin Community Hospital	1,000

Source: Nielsen Claritas Business Facts

Top Regional Businesses in the CC Labor Market Area.

Description	Business Name	Local Employees
Federal, state, and local government	Edwards AFB	15,978
Federal, state, and local government	Naval Air Warfare Center	5,000
Federal, state, and local government	US Navy Public Affairs Office	5,000
All Other Traveler Accommodation	Mammoth Mountain Ski Area	2,500
All Other Nonmetallic Mineral Mining	US Borax Inc.	1,001
Federal, state, and local government	US Naval Air Weapons Station	900
Engineering Services	TUV Industry Services	700
All Other Specialty Food Stores	C G Roxane Water Company	500
Elementary and Secondary Schools	Mammoth Unified School District	400
All Other Miscellaneous Ambulatory Health Care Services	Mammoth Hospital	370

Source: Nielsen Claritas Business Facts

Top Regional Businesses in the PC Labor Market Area.

Description	Business Name	Local Employees
Other Miscellaneous Durable Good Merchant Wholesalers	Walmart Distribution Center	1,300
Psychiatric and Substance Abuse Hospitals	Porterville Developmental Center	750
Other Gambling Industries	Eagle Mountain Casino	700
General Medical and Surgical Hospitals	Sierra View District Hospital	650
Federal, state, and local government	County of Tulare	430
Dept. Stores (except Discount Dept Stores)	Walmart Discount Cities	401
Colleges, Universities, and Professional Schools	Porterville College	300
Analytical Laboratory Instrument Manufacturing	Beckman Coulter Inc	280
Poultry Processing	Del Mesa Farms	280
Commercial Banking	Bank of the Sierra	200

Source: Nielsen Claritas Business Facts