

ACCJC Student Achievement Data: Incoming Student Data



Bakersfield
COLLEGE



Table 1: Placement Level of Incoming High School Graduates¹

	2006-07						2007-08						2008-09						2009-10						2010-11					
	English		Reading		Math		English		Reading		Math		English		Reading		Math		English		Reading		Math		English		Reading		Math	
	#	%	#	%	#	%	#	%	#	%	#	%	#	%	#	%	#	%	#	%	#	%	#	%	#	%	#	%	#	%
Degree Applicable Class	920	45%	1,207	52%	1,669	71%	906	42%	1,304	56%	1,598	68%	679	25%	1,680	62%	1,115	39%	722	29%	1,459	59%	908	36%	813	31%	1,516	59%	864	33%
Pre-Collegiate Class	1,130	55%	1,108	48%	690	29%	1,246	58%	1,015	44%	749	32%	2,002	75%	1,019	38%	1,738	61%	1,780	71%	1,035	41%	1,633	64%	1,771	69%	1,060	41%	1,757	67%

¹ **Total Incoming High School Graduates:** Students who enrolled in Bakersfield College within three months from their high school graduation and took at least one assessment test.

Figure 1: Placement Level of Incoming High School Graduates

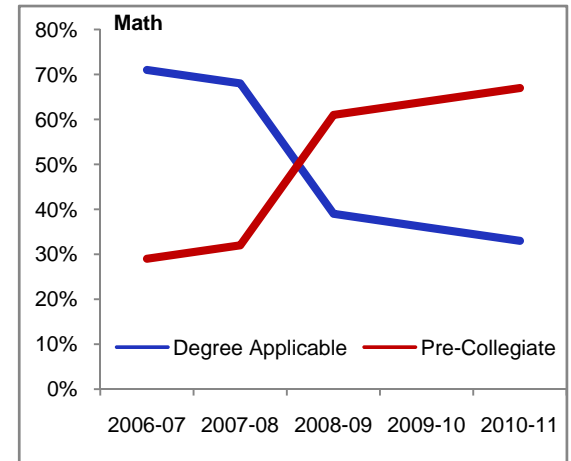
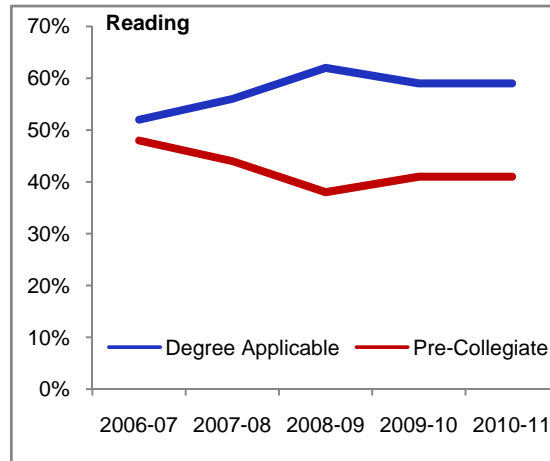
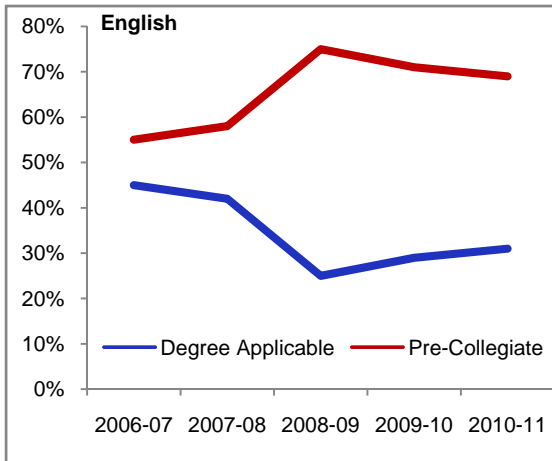


Table 2: Placement Level of Incoming High School Graduates¹ by Gender

	2006-07						2007-08						2008-09						2009-10						2010-11						
	English		Reading		Math		English		Reading		Math		English		Reading		Math		English		Reading		Math		English		Reading		Math		
	#	%	#	%	#	%	#	%	#	%	#	%	#	%	#	%	#	%	#	%	#	%	#	%	#	%	#	%	#	%	
Female																															
Degree Applicable Class		487	46%	568	48%	869	71%	475	43%	650	55%	796	66%	363	26%	831	60%	547	37%	399	30%	740	55%	453	33%	431	32%	750	56%	420	31%
Pre-Collegiate Class		580	54%	626	52%	354	29%	626	57%	531	45%	402	34%	1,019	74%	563	40%	935	63%	938	70%	594	45%	902	67%	915	68%	591	44%	948	69%
Male																															
Degree Applicable Class		433	44%	638	57%	800	70%	429	41%	651	58%	797	70%	315	24%	848	65%	567	41%	323	28%	719	62%	455	38%	372	31%	752	62%	431	35%
Pre-Collegiate Class		550	56%	482	43%	335	30%	612	59%	476	42%	340	30%	983	76%	456	35%	803	59%	842	72%	441	38%	731	62%	835	69%	453	38%	790	65%

¹ **Total Incoming High School Graduates:** Students who enrolled in Bakersfield College within three months from their high school graduation and took at least one assessment test.

Figure 2: Percentage of Incoming High School Graduates Placed into Degree-Applicable Classes by Gender

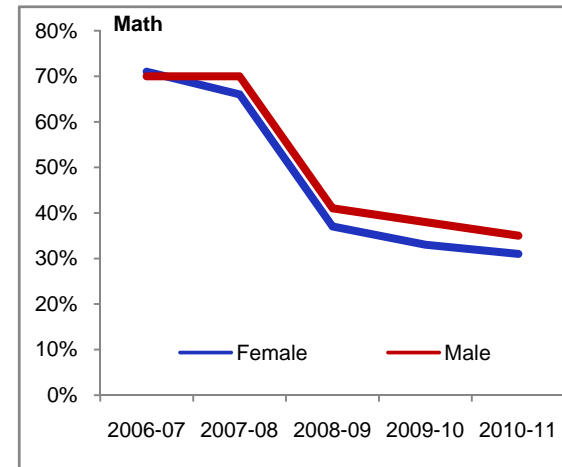
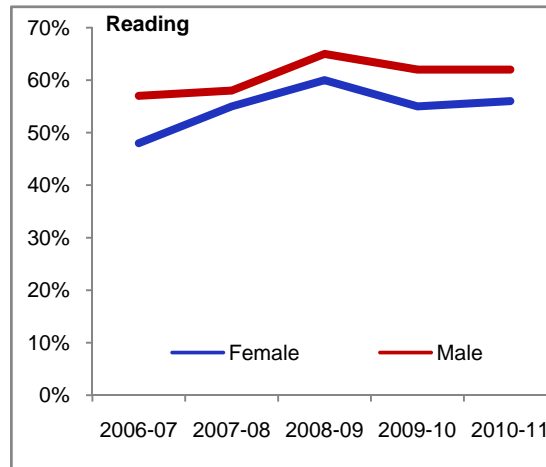
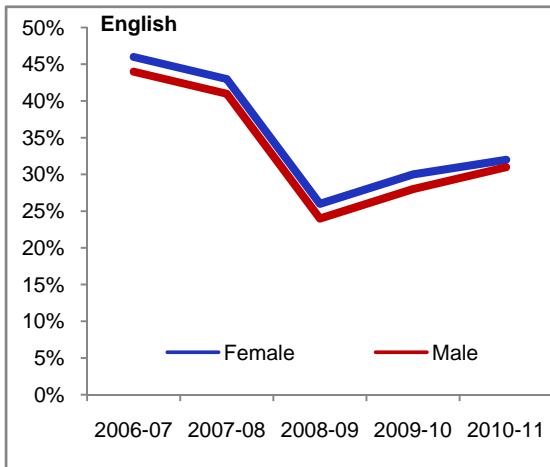


Table 3: Placement Level of Incoming High School Graduates¹ by Ethnicity

	2006-07						2007-08						2008-09						2009-10						2010-11					
	English		Reading		Math		English		Reading		Math		English		Reading		Math		English		Reading		Math		English		Reading		Math	
	#	%	#	%	#	%	#	%	#	%	#	%	#	%	#	%	#	%	#	%	#	%	#	%	#	%	#	%	#	%
African American																														
Degree Applicable Class	22	22%	48	42%	57	50%	32	22%	54	35%	84	55%	30	19%	80	49%	37	23%	16	12%	50	37%	19	14%	32	21%	67	45%	29	19%
Pre-Collegiate Class	79	78%	65	58%	56	50%	116	78%	99	65%	70	45%	132	81%	83	51%	126	77%	119	88%	85	63%	116	86%	117	79%	82	55%	120	81%
American Indian																														
Degree Applicable Class	7	35%	13	65%	15	75%	9	56%	10	63%	13	81%	6	22%	17	63%	6	22%	2	13%	7	47%	2	13%	1	8%	6	50%	3	25%
Pre-Collegiate Class	13	65%	7	35%	5	25%	7	44%	6	38%	3	19%	21	78%	10	37%	21	78%	13	87%	8	53%	13	87%	11	92%	6	50%	9	75%
Asian/Filipino/Pacific Islander																														
Degree Applicable Class	42	44%	61	47%	112	82%	41	46%	52	50%	88	81%	24	24%	58	57%	67	59%	30	25%	58	51%	63	53%	33	33%	51	52%	55	53%
Pre-Collegiate Class	54	56%	69	53%	24	18%	48	54%	51	50%	20	19%	78	76%	43	43%	46	41%	88	75%	55	49%	57	48%	67	67%	48	48%	48	47%
Hispanic/Latino																														
Degree Applicable Class	385	36%	518	41%	872	67%	362	33%	614	50%	802	63%	258	17%	825	54%	565	34%	333	22%	784	52%	490	31%	397	25%	820	52%	470	29%
Pre-Collegiate Class	695	64%	742	59%	425	33%	749	67%	619	50%	462	37%	1,242	83%	692	46%	1,090	66%	1,189	78%	735	48%	1,071	69%	1,176	75%	750	48%	1,134	71%
White																														
Degree Applicable Class	437	62%	530	72%	572	78%	411	60%	499	71%	536	77%	333	41%	642	79%	397	49%	312	49%	506	80%	303	48%	310	48%	505	78%	268	41%
Pre-Collegiate Class	264	38%	204	28%	162	22%	270	40%	201	29%	157	23%	475	59%	166	21%	413	51%	323	51%	129	20%	329	52%	339	52%	140	22%	383	59%
Two or more races																														
Degree Applicable Class	11	69%	13	72%	14	78%	17	59%	23	79%	22	76%	18	49%	30	81%	22	58%	21	40%	40	77%	28	53%	35	42%	60	71%	36	42%
Pre-Collegiate Class	5	31%	5	28%	4	22%	12	41%	6	21%	7	24%	19	51%	7	19%	16	42%	31	60%	12	23%	25	47%	49	58%	24	29%	49	58%
Unknown																														
Degree Applicable Class	16	44%	24	60%	27	66%	34	44%	52	61%	53	64%	10	22%	28	61%	21	45%	8	32%	14	56%	3	12%	5	29%	7	41%	3	18%
Pre-Collegiate Class	20	56%	16	40%	14	34%	44	56%	33	39%	30	36%	35	78%	18	39%	26	55%	17	68%	11	44%	22	88%	12	71%	10	59%	14	82%

¹ Total Incoming High School Graduates: Students who enrolled in Bakersfield College within three months from their high school graduation and took at least one assessment test.

Figure 3: Percentage of Incoming High School Graduates Placed into Degree-Applicable Classes by Ethnicity

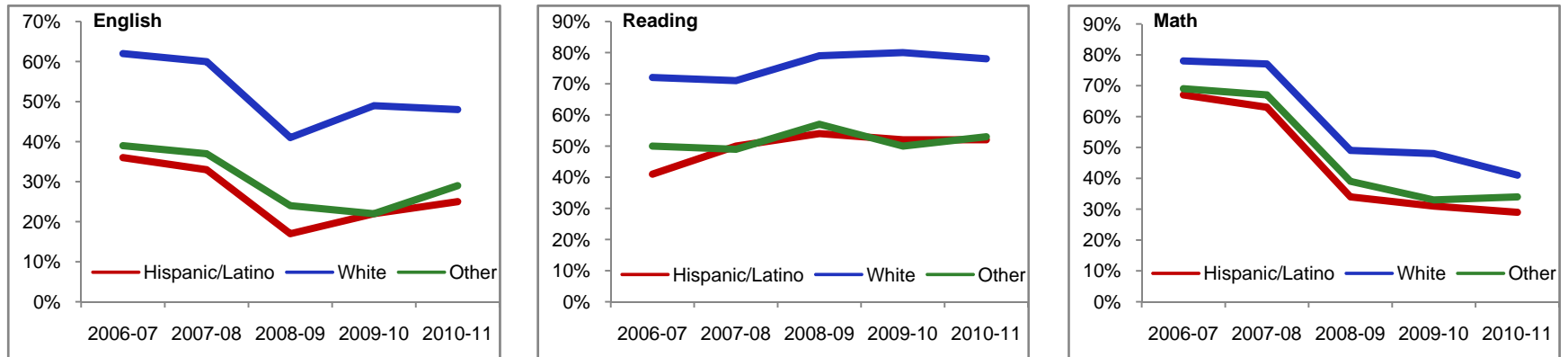


Table 4: Placement Level of Incoming High School Graduates¹ by Socio-Economic Status²

	2006-07						2007-08						2008-09						2009-10						2010-11					
	English		Reading		Math		English		Reading		Math		English		Reading		Math		English		Reading		Math		English		Reading		Math	
	#	%	#	%	#	%	#	%	#	%	#	%	#	%	#	%	#	%	#	%	#	%	#	%	#	%	#	%	#	%
Awarded Financial Aid																														
Degree Applicable Class	396	35%	548	42%	879	66%	439	35%	704	52%	900	66%	287	19%	836	54%	546	33%	374	23%	841	52%	507	31%	464	27%	925	53%	511	29%
Pre-Collegiate Class	720	65%	754	58%	450	34%	820	65%	649	48%	470	34%	1,236	81%	704	46%	1,098	67%	1,249	77%	778	48%	1,143	69%	1,274	73%	809	47%	1,254	71%
Not Awarded Financial Aid																														
Degree Applicable Class	524	56%	659	65%	790	77%	467	52%	600	62%	698	71%	392	34%	844	73%	569	47%	348	40%	618	71%	401	45%	349	41%	591	70%	353	41%
Pre-Collegiate Class	410	44%	354	35%	240	23%	426	48%	366	38%	279	29%	766	66%	315	27%	640	53%	531	60%	257	29%	490	55%	497	59%	251	30%	503	59%

¹ **Total Incoming High School Graduates:** Students who enrolled in Bakersfield College within three months from their high school graduation and took at least one assessment test.

² Socio-Economic Status is based on a student's need for financial aid.

Awarded financial aid means a student applied for and was awarded financial aid. The student may or may not have accepted the award.

Not awarded financial aid means that a student was not awarded financial aid. The student may have applied and was not awarded aid or the student may not have applied for the aid.

Figure 4: Percentage of Incoming High School Graduates Placed into Degree-Applicable Classes by Socio-Economic Status

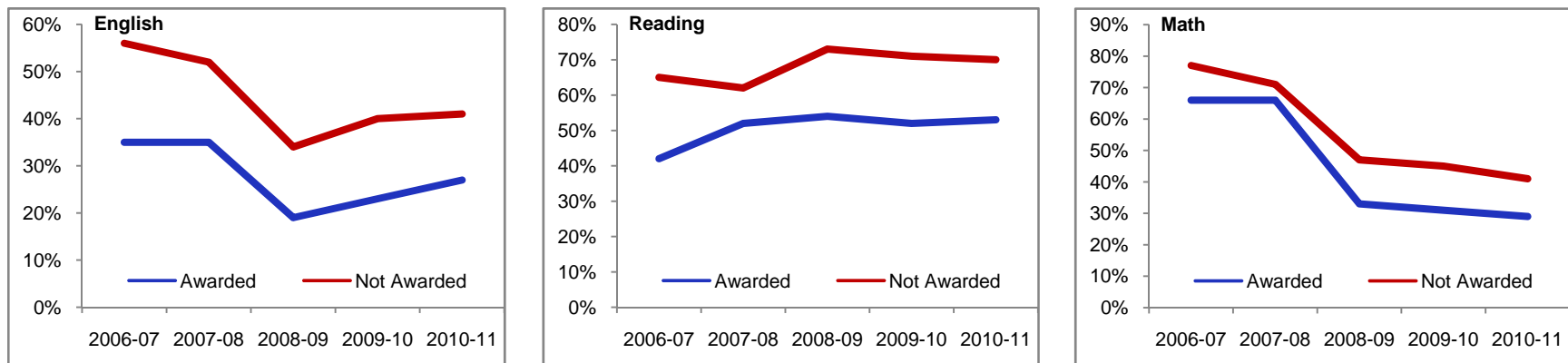


Table 5: Educational Goals of Incoming Students¹

	2006-07		2007-08		2008-09		2009-10		2010-11	
	#	%	#	%	#	%	#	%	#	%
Associate degree w/o transfer	156	2%	197	2%	295	3%	129	1%	106	1%
BA after completing AA	3,741	45%	3,137	34%	1,747	17%	3,322	38%	3,134	42%
BA w/o completing AA	767	9%	771	8%	662	6%	592	7%	582	8%
Discover career interests	190	2%	226	2%	147	1%	238	3%	257	3%
Earn vocational certificate	203	2%	152	2%	129	1%	144	2%	132	2%
Educational development	283	3%	269	3%	194	2%	158	2%	128	2%
GED preparation	151	2%	168	2%	151	1%	181	2%	205	3%
Improve basic skills	65	1%	74	1%	477	5%	79	1%	61	1%
Job advancement	531	6%	421	5%	344	3%	365	4%	358	5%
Maintain certificate/license	153	2%	121	1%	85	1%	95	1%	117	2%
Prepare for new career	690	8%	658	7%	519	5%	641	7%	657	9%
Vocational degree w/o transfer	178	2%	149	2%	121	1%	141	2%	117	2%
Undecided	941	11%	1,353	15%	997	10%	1,574	18%	1,525	20%
Unknown / Uncollected	233	3%	1,604	15%	4,459	30%	1,060	11%	161	2%
	8,282	100%	9,300	100%	10,327	100%	8,719	100%	7,540	100%

¹ **Incoming Students:** Students who first enrolled at Bakersfield College in the specified year.

Figure 5: Educational Goals of Incoming Students

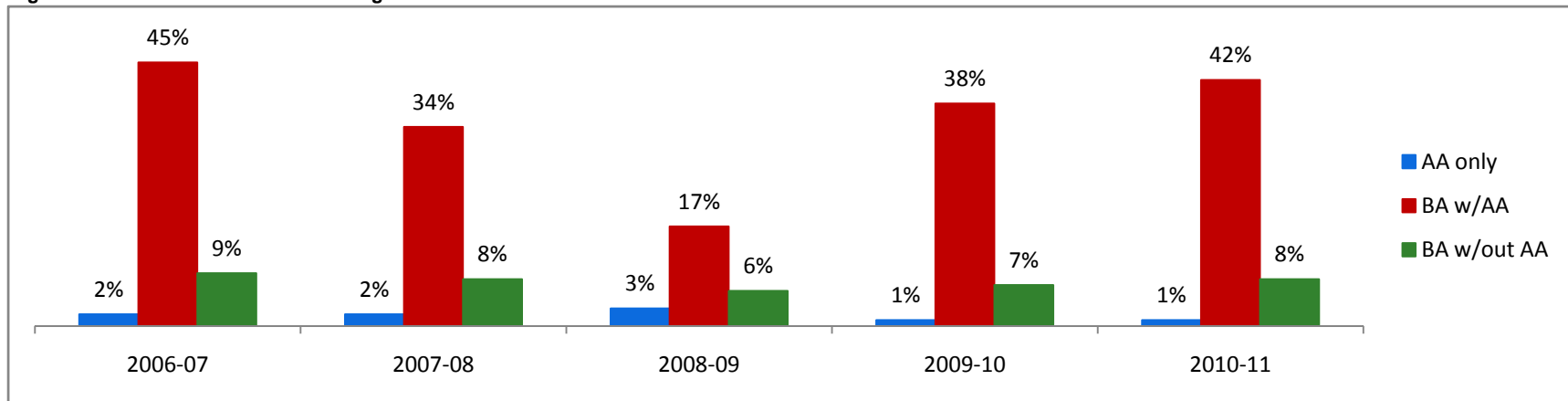


Table 6: First-Time Students Completing Matriculation Requirements¹

	2006-07		2007-08		2008-09		2009-10		2010-11	
First-time Students	6,395		6,975		7,767		6,640		5,859	
	#	%	#	%	#	%	#	%	#	%
Assessment										
Completed	4,529	71%	4,913	70%	5,334	69%	4,930	74%	4,550	78%
Exempt	7	0%	11	0%	4	0%	2	0%	3	0%
Not Completed	1,859	29%	2,051	29%	2,429	31%	1,708	26%	1,306	22%
Orientation										
Completed	3,920	61%	4,403	63%	4,896	63%	4,200	63%	4,031	69%
Exempt	8	0%	10	0%	4	0%	0	0%	4	0%
Not Completed	2,467	39%	2,562	37%	2,867	37%	2,440	37%	1,824	31%
Counseling										
Completed	3,775	59%	4,084	59%	4,389	57%	3,861	58%	3,418	58%
Exempt	7	0%	9	0%	4	0%	0	0%	3	0%
Not Completed	2,613	41%	2,882	41%	3,374	43%	2,779	42%	2,438	42%
Ed Plan										
Completed	1,166	18%	1,230	18%	917	12%	883	13%	817	14%
Exempt	7	0%	9	0%	1	0%	0	0%	0	0%
Not Completed	5,222	82%	5,736	82%	6,849	88%	5,757	87%	5,042	86%

¹ **Matriculation Requirements:** There are four matriculation requirements for CA Community College students: Orientation, Assessment, Counseling, and the development of an Educational Plan.

ACCJC Student Achievement Data: Enrolled Student Data



Bakersfield
COLLEGE



Table 7: Student Headcount by Age, Gender, Ethnicity, and Socio-Economic Status

	2006-07		2007-08		2008-09		2009-10		2010-11	
	#	% change - Prior Yr	#	% change - Prior Yr	#	% change - Prior Yr	#	% change - Prior Yr	#	% change - Prior Yr
Student Headcount, Unduplicated ¹	24,555	--	27,371	11%	29,709	9%	28,264	-5%	27,398	-3%
	#	%	#	%	#	%	#	%	#	%
Age										
19 or Younger	6,393	26%	7,012	26%	7,624	26%	7,491	27%	6,852	25%
20 - 24	7,802	32%	8,457	31%	9,446	32%	9,359	33%	9,641	35%
25 - 29	3,389	14%	3,914	14%	4,291	14%	4,164	15%	3,961	14%
30 - 39	3,554	14%	4,047	15%	4,354	15%	3,972	14%	3,874	14%
40 - 49	2,135	9%	2,400	9%	2,447	8%	2,051	7%	1,892	7%
50 or Older	1,281	5%	1,539	6%	1,546	5%	1,227	4%	1,178	4%
Unknown	1	0%	2	0%	1	0%		0%		0%
Gender										
Female	13,927	57%	15,307	56%	16,485	55%	15,177	54%	14,947	55%
Male	10,611	43%	11,977	44%	13,142	44%	13,033	46%	12,367	45%
Unknown	17	0%	87	0%	82	0%	54	0%	84	0%
Ethnicity										
African American	1,634	7%	1,967	7%	2,205	7%	2,183	8%	2,185	8%
American Indian	324	1%	355	1%	361	1%	310	1%	260	1%
Asian/Filipino/Pacific Islander	1,528	6%	1,635	6%	1,701	6%	1,590	6%	1,420	5%
Hispanic/Latino	10,773	44%	12,163	44%	14,074	47%	13,709	49%	14,028	51%
White	9,433	38%	9,974	36%	10,090	34%	9,365	33%	8,593	31%
Two or more races	153	1%	205	1%	295	1%	428	2%	579	2%
Unknown	710	3%	1,072	4%	983	3%	679	2%	333	1%
Socio-Economic Status²										
Awarded Financial Aid	10,919	56%	11,609	58%	13,206	56%	14,449	49%	15,552	43%
Not Awarded Financial Aid	13,636	44%	15,762	42%	16,503	44%	13,815	51%	11,846	57%

¹ **Student Headcount, Unduplicated:** Number of students enrolled on census day, where each student is counted one time.

² Socio-Economic Status is based on a student's need for financial aid.

Awarded financial aid means a student applied for and was awarded financial aid. The student may or may not have accepted the award.

Not awarded financial aid means that a student was not awarded financial aid. The student may have applied and was not awarded aid or the student may not have applied for the aid.

Table 8: Enrollment Status of Enrolled Students¹

	2006-07		2007-08		2008-09		2009-10		2010-11											
	Fall 2006	Spring 2007	Fall 2007	Spring 2008	Fall 2008	Spring 2009	Fall 2009	Spring 2010	Fall 2010	Spring 2011										
	#	%	#	%	#	%	#	%	#	%										
Part-Time (Less than 12 credits)	11,267	72%	12,241	75%	12,628	73%	13,314	76%	13,152	71%	13,661	70%	12,348	70%	13,350	72%	13,094	70%	13,354	71%
Full-Time (12 or more credits)	4,273	27%	3,889	24%	4,431	26%	3,937	23%	5,112	28%	5,107	26%	5,178	29%	5,108	28%	5,607	30%	5,353	29%
Non-Credit / Other	186	1%	175	1%	250	1%	202	1%	191	1%	615	3%	103	1%	90	0%	53	0%	57	0%

¹ Enrollment status counts students who were enrolled at Bakersfield College at Census Day of the specified term.

Table 9: Number of Students Persisting to the Next Term: Spring to Fall and Fall to Spring

	2006-07		2007-08		2008-09		2009-10		2010-11	
	Spring 2006	Fall 2006	Spring 2007	Fall 2007	Spring 2008	Fall 2008	Spring 2009	Fall 2009	Spring 2010	Fall 2010
Total Students Enrolled	14,887	15,855	16,454	17,576	17,590	19,224	19,673	18,593	19,369	19,568
Total Persisting Students	#	% of Spring 06 students	#	% of Spring 07 students	#	% of Spring 08 students	#	% of Spring 09 students	#	% of Spring 10 students
Spring to Fall ¹	7,911	53%	8,553	52%	9,355	53%	9,975	51%	11,086	57%
Total Persisting Students	#	% of Fall 06 students	#	% of Fall 07 students	#	% of Fall 08 students	#	% of Fall 09 students	#	% of Fall 10 students
Fall to Spring	10,269	65%	10,988	63%	12,548	65%	12,507	67%	13,591	69%

¹ Spring to fall calculation includes students from the spring semester of the previous academic year persisting to the fall semester of the specified academic year.

Figure 6: Percentage of Students Persisting to the Next Term: Spring to Fall and Fall to Spring

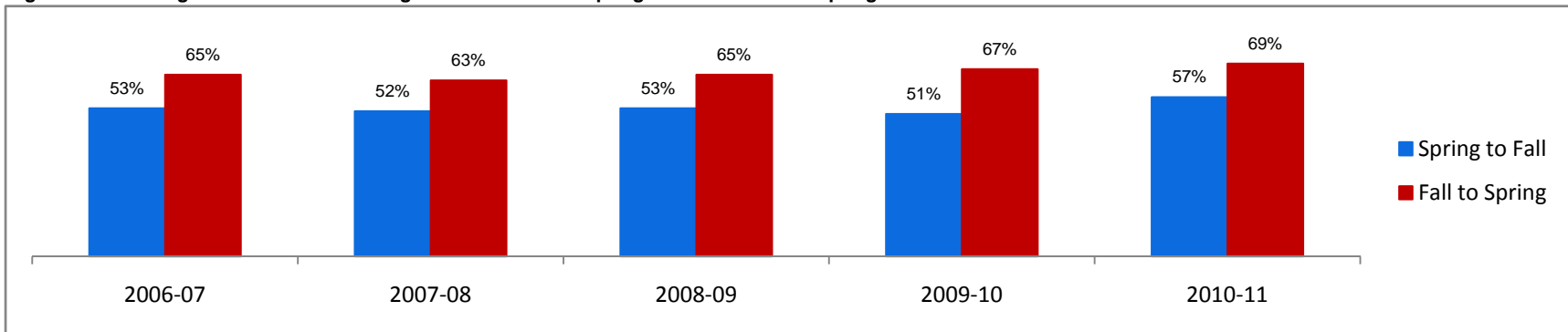


Table 10: Number of Students Persisting to the Next Term by Age

	2006-07		2007-08		2008-09		2009-10		2010-11	
	#	% of total persisting students	#	% of total persisting students	#	% of total persisting students	#	% of total persisting students	#	% of total persisting students
19 or Younger										
Spring to Fall ¹	2,554	32%	2,736	32%	2,960	32%	3,231	32%	3,477	31%
Fall to Spring	3,687	36%	4,003	36%	4,457	36%	4,555	36%	4,574	34%
20 - 24										
Spring to Fall ¹	2,621	33%	2,750	32%	3,071	33%	3,322	33%	3,636	33%
Fall to Spring	3,249	32%	3,391	31%	4,000	32%	3,948	32%	4,447	33%
25 - 29										
Spring to Fall ¹	928	12%	1,051	12%	1,217	13%	1,306	13%	1,426	13%
Fall to Spring	1,173	11%	1,298	12%	1,536	12%	1,521	12%	1,635	12%
30 - 39										
Spring to Fall ¹	973	12%	1,083	13%	1,173	13%	1,182	12%	1,415	13%
Fall to Spring	1,171	11%	1,244	11%	1,390	11%	1,440	12%	1,685	12%
40 - 49										
Spring to Fall ¹	587	7%	592	7%	619	7%	630	6%	721	7%
Fall to Spring	684	7%	690	6%	794	6%	708	6%	809	6%
50 or Older										
Spring to Fall ¹	248	3%	341	4%	315	3%	304	3%	411	4%
Fall to Spring	305	3%	362	3%	371	3%	335	3%	441	3%

¹ Spring to fall calculation includes students from the spring semester of the previous academic year persisting to the fall semester of the specified academic year.

Table 11: Number of Students Persisting to the Next Term by Gender

	2006-07		2007-08		2008-09		2009-10		2010-11	
	#	% of total persisting students	#	% of total persisting students	#	% of total persisting students	#	% of total persisting students	#	% of total persisting students
Female										
Spring to Fall ¹	4,800	61%	5,107	60%	5,546	59%	5,821	58%	6,175	56%
Fall to Spring	6,096	59%	6,405	58%	7,271	58%	7,135	57%	7,542	55%
Male										
Spring to Fall ¹	3,106	39%	3,437	40%	3,784	40%	4,133	41%	4,893	44%
Fall to Spring	4,166	41%	4,563	42%	5,241	42%	5,353	43%	6,008	44%
Unknown										
Spring to Fall ¹	5	0%	9	0%	20	0%	18	0%	14	0%
Fall to Spring	7	0%	19	0%	27	0%	16	0%	37	0%

¹ Spring to fall calculation includes students from the spring semester of the previous academic year persisting to the fall semester of the specified academic year.

Figure 7: Percentage of Students Persisting to the Next Term by Gender

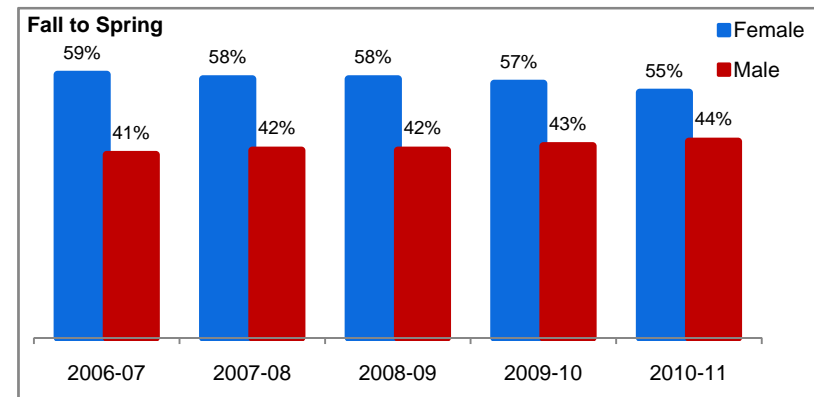
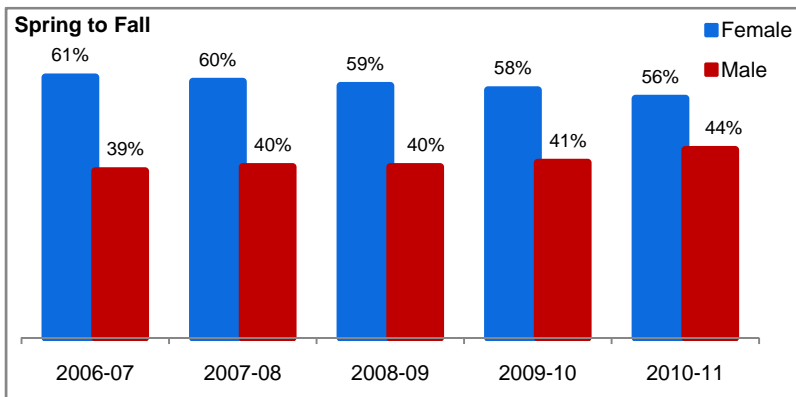


Table 12: Number of Students Persisting to the Next Term by Ethnicity

	2006-07		2007-08		2008-09		2009-10		2010-11	
	#	% of total persisting students	#	% of total persisting students	#	% of total persisting students	#	% of total persisting students	#	% of total persisting students
African American										
Spring to Fall ¹	427	5%	495	6%	550	6%	667	7%	676	6%
Fall to Spring	582	6%	687	6%	837	7%	831	7%	864	6%
American Indian										
Spring to Fall ¹	107	1%	103	1%	112	1%	94	1%	98	1%
Fall to Spring	132	1%	135	1%	148	1%	117	1%	121	1%
Asian/Filipino/Pacific Islander										
Spring to Fall ¹	498	6%	587	7%	595	6%	625	6%	625	6%
Fall to Spring	680	7%	726	7%	745	6%	734	6%	718	5%
Hispanic/Latino										
Spring to Fall ¹	3,741	47%	4,155	49%	4,631	50%	5,041	51%	5,741	52%
Fall to Spring	4,857	47%	5,284	48%	6,182	49%	6,406	51%	7,226	53%
White										
Spring to Fall ¹	2,914	37%	2,934	34%	3,130	33%	3,207	32%	3,632	33%
Fall to Spring	3,714	36%	3,752	34%	4,195	33%	4,022	32%	4,270	31%
Two or more races										
Spring to Fall ¹	63	1%	79	1%	113	1%	161	2%	233	2%
Fall to Spring	76	1%	112	1%	160	1%	234	2%	333	2%
Unknown										
Spring to Fall ¹	161	2%	200	2%	224	2%	180	2%	81	1%
Fall to Spring	228	2%	292	3%	281	2%	163	1%	59	0%

¹ Spring to fall calculation includes students from the spring semester of the previous academic year persisting to the fall semester of the specified academic year.

Figure 8: Percentage of Students Persisting to the Next Term by Ethnicity

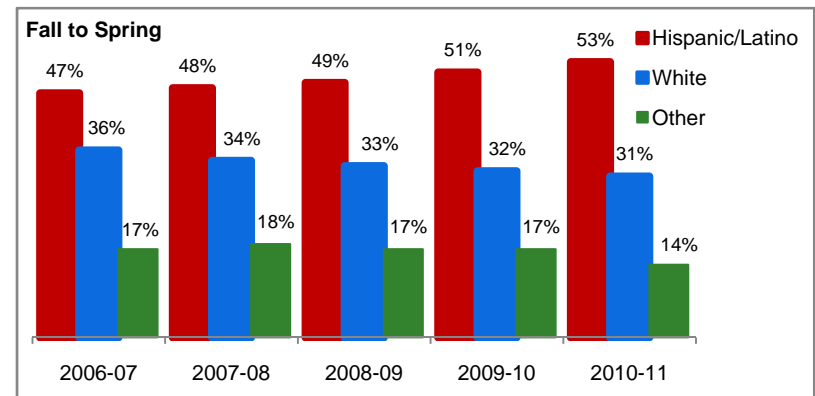
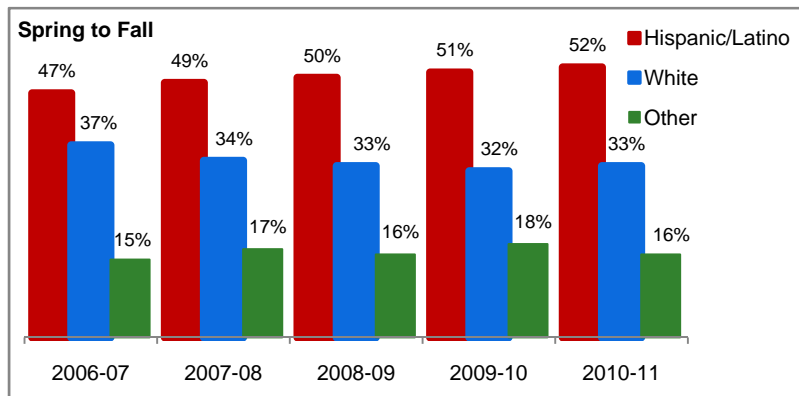


Table 13: Number of Students Persisting to the Next Term by Socio-Economic Status¹

	2006-07		2007-08		2008-09		2009-10		2010-11	
	#	% of total persisting students	#	% of total persisting students	#	% of total persisting students	#	% of total persisting students	#	% of total persisting students
Awarded Financial Aid										
Spring to Fall ²	4,452	56%	4,570	53%	5,111	55%	5,724	57%	6,825	62%
Fall to Spring	5,682	55%	6,082	55%	7,123	57%	7,909	63%	8,925	66%
Not Awarded Financial Aid										
Spring to Fall ²	3,459	44%	3,983	47%	4,244	45%	4,251	43%	4,261	38%
Fall to Spring	4,587	45%	4,906	45%	5,425	43%	4,598	37%	4,666	34%

¹ Socio-Economic Status is based on a student's need for financial aid.

Awarded financial aid means a student applied for and was awarded financial aid. The student may or may not have accepted the award.

Not awarded financial aid means that a student was not awarded financial aid. The student may have applied and was not awarded aid or the student may not have applied for the aid.

² Spring to fall calculation includes students from the spring semester of the previous academic year persisting to the fall semester of the specified academic year.

Figure 9: Percentage of Students Persisting to the Next Term by Socio-Economic Status

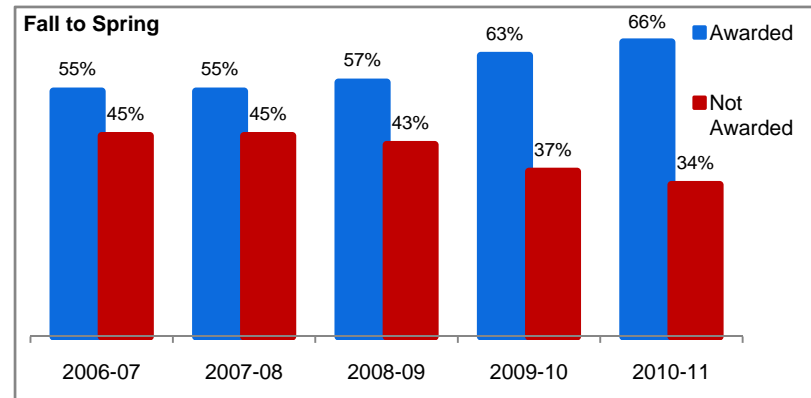
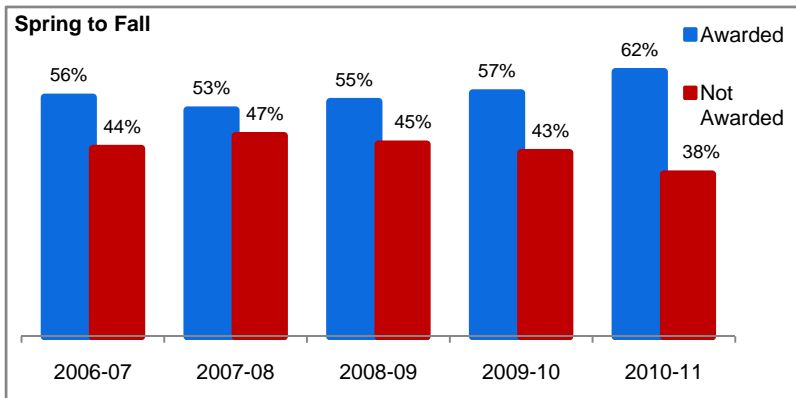


Table 14: Retention & Success Rates for Students Enrolled at Bakersfield College

	Collegewide					Basic Skills					CTE					Liberal Studies / Transfer				
	2006-07	2007-08	2008-09	2009-10	2010-11	2006-07	2007-08	2008-09	2009-10	2010-11	2006-07	2007-08	2008-09	2009-10	2010-11	2006-07	2007-08	2008-09	2009-10	2010-11
Collegewide Summary																				
Retention Rate ¹	88.3%	89.4%	84.2%	84.0%	82.7%	86.6%	86.2%	82.1%	79.3%	78.8%	92.3%	93.3%	88.5%	86.7%	86.1%	86.7%	87.9%	82.5%	83.6%	82.0%
Success Rate ²	68.5%	69.2%	65.5%	65.8%	64.2%	60.7%	59.8%	58.4%	50.9%	51.0%	79.7%	81.5%	76.2%	75.0%	74.4%	64.1%	64.5%	61.4%	64.4%	62.4%

¹ Success rate numerator: Number of course enrollments with a successful passing grade A,B,C,P(CR).

² Retention rate numerator: Number of course enrollments retained through the semester (grade = A,B,C,P/CR,D,F,NP/NC,I).

Success and Retention rate denominator: Number of enrollments retained (A,B,C,P/CR,D,F,NP/NC,I), w withdraw n (W), and dropped (DR). Note: Beginning Summer 2008, DR grades are in the denominator, generally leading to a higher denominator and lower rate; DR assignment occurs w hen a student drops between census day and the last day to drop without receiving a W (30% date); DR grades did not exist before Summer 2008.

Figure 10: Retention Rates for Students Enrolled at Bakersfield College

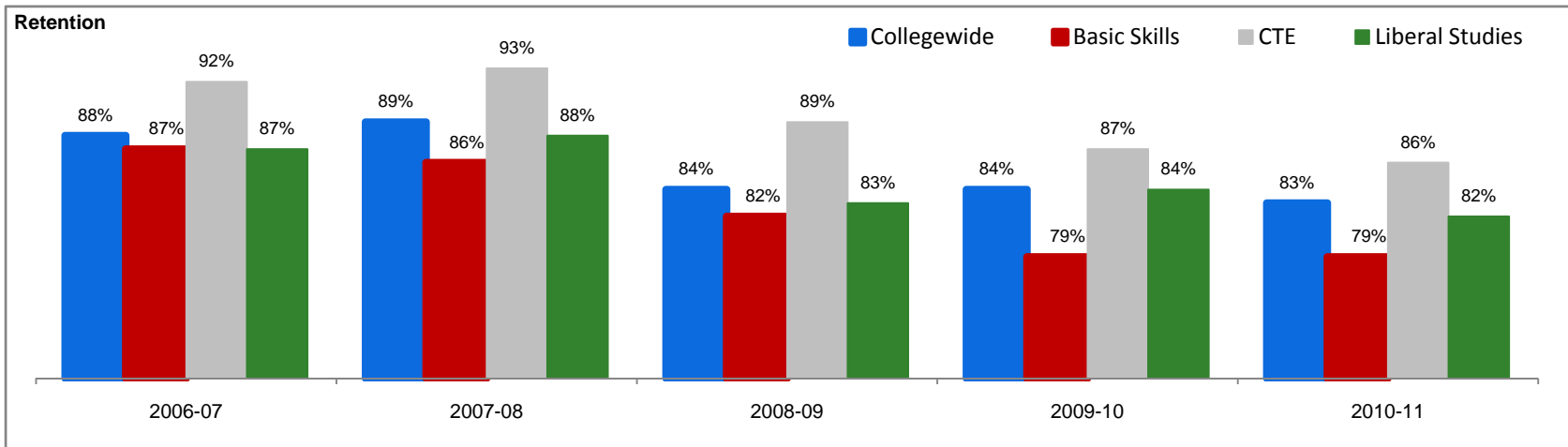


Figure 11: Success Rates for Students Enrolled at Bakersfield College

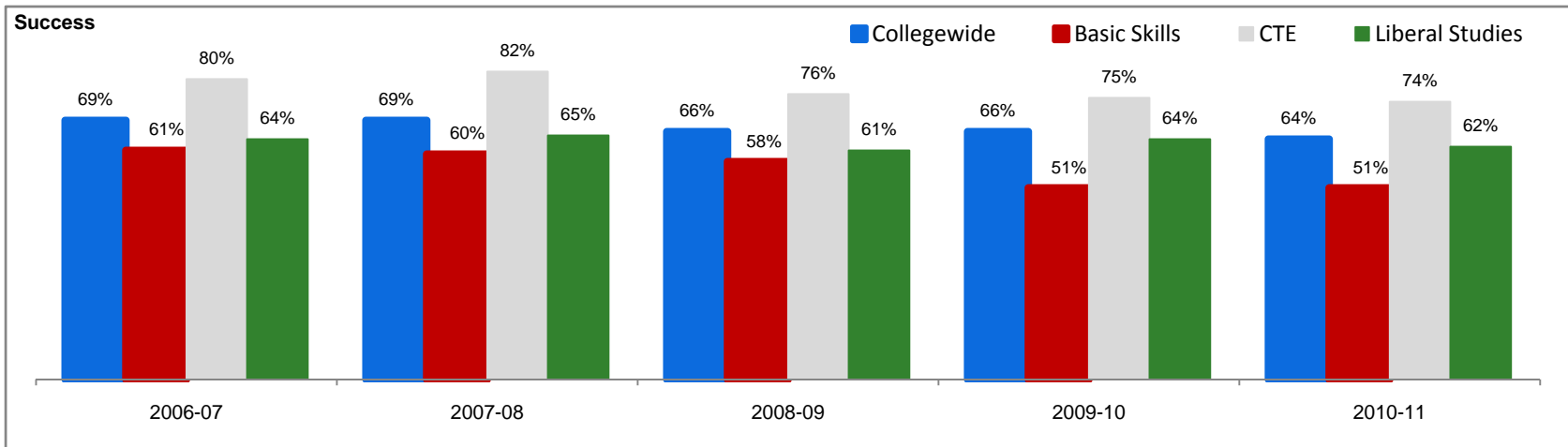


Table 15: Retention & Success Rates for Students Enrolled at Bakersfield College by Campus

	Collegewide					Basic Skills					CTE					Liberal Studies / Transfer				
	2006-07	2007-08	2008-09	2009-10	2010-11	2006-07	2007-08	2008-09	2009-10	2010-11	2006-07	2007-08	2008-09	2009-10	2010-11	2006-07	2007-08	2008-09	2009-10	2010-11
Campus																				
Arvin-Lamont																				
Retention Rate ¹	97.9%	95.0%	88.2%	88.1%	82.0%					85.3%	98.4%	96.2%	90.7%	88.7%		97.1%	92.2%	82.5%	87.5%	81.5%
Success Rate ²	88.1%	75.7%	71.5%	76.1%	58.2%					61.8%	92.8%	83.1%	76.0%	79.2%		79.4%	56.9%	61.4%	73.2%	57.7%
BC Apprenticeship Classes																				
Retention Rate				100.0%	100.0%									100.0%	100.0%					
Success Rate				98.6%	97.1%									98.6%	97.1%					
BC Distance Education - ITV																				
Retention Rate	70.9%	77.0%	65.7%	66.2%							71.5%	74.5%	62.0%	58.8%		70.8%	77.6%	66.2%	67.5%	
Success Rate	48.2%	56.4%	45.1%	41.1%							54.4%	56.2%	40.5%	40.3%		46.8%	56.5%	45.8%	41.3%	
BC Distance Education - Online																				
Retention Rate	79.8%	83.3%	74.7%	75.1%	73.0%	75.6%	78.5%	71.3%	67.6%	72.9%	82.3%	85.5%	75.3%	75.6%	73.1%	78.7%	82.3%	74.7%	76.8%	73.0%
Success Rate	51.2%	54.6%	48.7%	50.6%	47.4%	48.8%	42.2%	41.4%	30.6%	28.4%	59.5%	65.6%	57.9%	54.9%	51.6%	45.3%	48.8%	44.1%	52.5%	49.3%
BC Northwest Extension																				
Retention Rate	99.1%	99.5%	99.7%	99.7%	99.6%						99.1%	99.5%	99.7%	99.7%	99.6%					
Success Rate	94.8%	97.3%	98.2%	97.8%	98.8%						94.8%	97.3%	98.2%	97.8%	98.8%					
BC Weekend Classes																				
Retention Rate	90.3%	94.4%	91.1%	83.2%	85.0%	80.8%	92.1%	82.1%	68.1%	77.8%	99.2%	96.2%	96.6%	90.2%	91.4%	86.4%	93.2%	89.9%	83.8%	83.8%
Success Rate	72.8%	74.3%	70.8%	67.5%	70.1%	51.9%	65.8%	53.7%	43.5%	35.6%	84.4%	81.0%	78.6%	85.9%	81.8%	69.0%	70.0%	69.5%	67.4%	69.1%
Bakersfield Area																				
Retention Rate	96.9%	97.1%	94.2%	92.1%	93.2%						96.8%	96.9%	93.9%	91.6%	92.6%	97.8%	98.4%	96.3%	93.5%	98.9%
Success Rate	92.2%	89.7%	85.7%	86.2%	89.4%						92.6%	89.8%	84.6%	85.5%	88.5%	89.2%	88.9%	92.0%	88.1%	96.6%
Bakersfield Main Campus																				
Retention Rate	88.0%	88.7%	83.9%	83.3%	81.9%	87.0%	86.0%	82.1%	79.1%	78.5%	91.3%	92.1%	87.2%	84.2%	83.9%	87.1%	87.9%	83.0%	83.8%	82.0%
Success Rate	67.0%	67.4%	64.6%	64.1%	62.6%	60.6%	59.8%	58.7%	50.9%	51.9%	76.5%	78.3%	73.3%	70.3%	70.3%	64.8%	64.8%	62.4%	64.6%	62.4%
Delano Campus																				
Retention Rate	91.7%	92.4%	87.2%	87.8%	86.4%	90.0%	92.2%	90.4%	89.0%	85.6%	93.7%	91.9%	86.0%	83.9%	80.5%	91.6%	92.5%	86.9%	88.0%	87.3%
Success Rate	71.6%	71.2%	67.5%	70.0%	66.9%	69.9%	70.4%	68.0%	65.5%	61.2%	77.0%	71.1%	69.3%	68.0%	63.9%	70.7%	71.4%	67.0%	71.2%	68.7%
Shafter-Westec																				
Retention Rate	100.0%	99.9%	99.9%	100.0%	99.8%						100.0%	99.9%	99.9%	100.0%	99.8%					
Success Rate	99.9%	97.1%	97.5%	99.2%	98.3%						99.9%	97.1%	97.5%	99.2%	98.3%					
Stockdale High School																				
Retention Rate	87.5%	90.5%	83.8%	83.7%	79.7%	88.0%	84.7%	78.2%	88.7%	73.4%	90.0%	92.2%	88.5%	82.8%	84.4%	86.5%	90.7%	83.2%	82.9%	80.9%
Success Rate	69.8%	73.6%	70.6%	68.5%	67.2%	63.2%	58.8%	57.8%	65.3%	57.1%	74.5%	77.7%	75.4%	69.2%	75.5%	68.6%	74.2%	70.8%	69.1%	69.0%
Weill Institute																				
Retention Rate	94.8%	95.3%	92.0%	93.4%	90.1%					67.6%	94.8%	96.5%	94.1%	94.4%	91.8%	90.0%	82.9%	78.8%	80.2%	78.3%
Success Rate	86.2%	88.6%	80.0%	84.3%	82.0%		66.7%			32.4%	86.4%	91.5%	83.6%	85.3%	85.0%	50.0%	50.0%	58.0%	70.9%	63.4%

¹ Success rate numerator: Number of course enrollments with a successful passing grade (A, B, C, P/CR).

² Retention rate numerator: Number of course enrollments retained through the semester (grade = A, B, C, P/CR, D, F, NP/NC, I).

Success and Retention rate denominator: Number of enrollments retained (A, B, C, P/CR, D, F, NP/NC, I), w ithdraw n (W), and dropped (DR). Note: Beginning Summer 2008, DR grades are in the denominator, generally leading to a higher denominator and lower rate; DR assignment occurs w hen a student drops between census day and the last day to drop without receiving a W (30% date); DR grades did not exist before Summer 2008.

Table 16: Retention & Success Rates for Students Enrolled at Bakersfield College by Campus Category

Campus (Categorized)	Collegewide					Basic Skills					CTE					Liberal Studies / Transfer				
	2006-07	2007-08	2008-09	2009-10	2010-11	2006-07	2007-08	2008-09	2009-10	2010-11	2006-07	2007-08	2008-09	2009-10	2010-11	2006-07	2007-08	2008-09	2009-10	2010-11
Bakersfield Mail Campus																				
Retention Rate ¹	88.1%	88.8%	84.0%	83.3%	81.9%	86.9%	86.0%	82.1%	79.1%	78.5%	91.5%	92.2%	87.4%	84.2%	83.9%	87.1%	88.0%	83.1%	83.8%	82.0%
Success Rate ²	67.1%	67.5%	64.7%	64.1%	62.7%	60.5%	59.8%	58.7%	50.9%	51.8%	76.6%	78.4%	73.4%	70.3%	70.4%	64.8%	64.9%	62.5%	64.6%	62.5%
Delano Campus Center																				
Retention Rate	91.7%	92.4%	87.2%	87.8%	86.4%	90.0%	92.2%	90.4%	89.0%	85.6%	93.7%	91.9%	86.0%	83.9%	80.5%	91.6%	92.5%	86.9%	88.0%	87.3%
Success Rate	71.6%	71.2%	67.5%	70.0%	66.9%	69.9%	70.4%	68.0%	65.5%	61.2%	77.0%	71.1%	69.3%	68.0%	63.9%	70.7%	71.4%	67.0%	71.2%	68.7%
Other Campus Centers / Locations																				
Retention Rate	88.4%	90.6%	83.8%	85.0%	84.1%	78.2%	79.8%	72.9%	70.7%	73.1%	93.3%	94.9%	90.3%	90.5%	89.5%	80.0%	84.2%	76.1%	77.4%	75.4%
Success Rate	73.0%	74.9%	67.4%	70.6%	69.5%	51.9%	46.7%	45.3%	35.6%	33.8%	84.4%	86.4%	80.8%	82.0%	80.9%	53.6%	57.5%	51.6%	55.8%	54.5%

¹ Success rate numerator: Number of course enrollments with a successful passing grade (A,B,C,P/CR).

² Retention rate numerator: Number of course enrollments retained through the semester (grade = A,B,C,P/CR,D,F,NP/NC,I).

Success and Retention rate denominator: Number of enrollments retained (A,B,C,P/CR,D,F,NP/NC,I), withdrawn (W), and dropped (DR). Note: Beginning Summer 2008, DR grades are in the denominator, generally leading to a higher denominator and lower rate; DR assignment occurs when a student drops between census day and the last day to drop without receiving a W (30% date); DR grades did not exist before Summer 2008.

Figure 12: Retention & Success Rates for Students Enrolled at Bakersfield College by Campus Categories

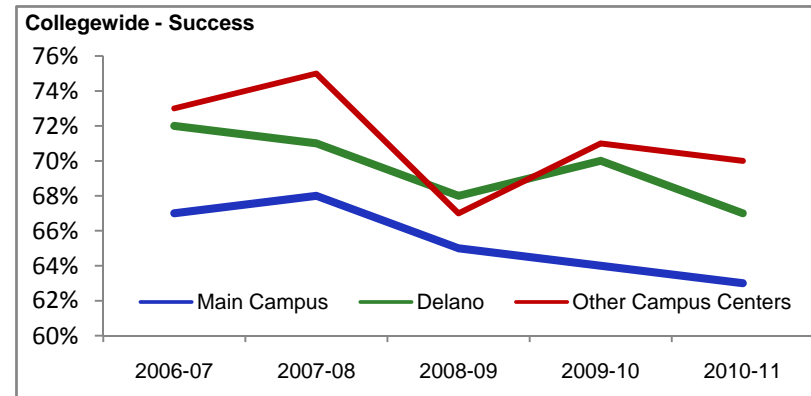
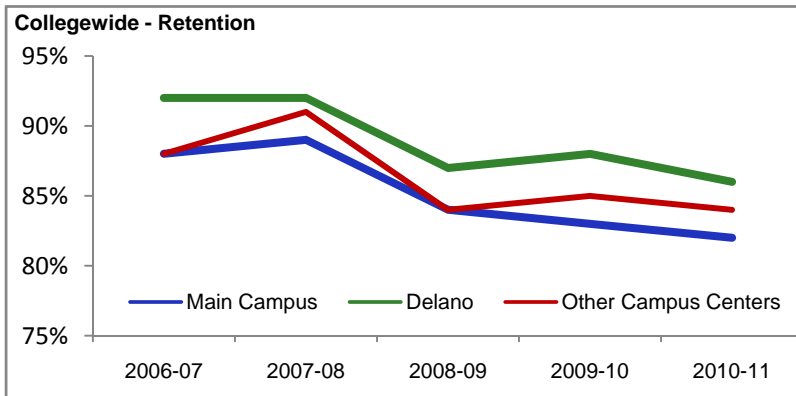


Table 17: Retention & Success Rates for Students Enrolled at Bakersfield College by Delivery Mode

	Collegewide					Basic Skills					CTE					Liberal Studies / Transfer				
	2006-07	2007-08	2008-09	2009-10	2010-11	2006-07	2007-08	2008-09	2009-10	2010-11	2006-07	2007-08	2008-09	2009-10	2010-11	2006-07	2007-08	2008-09	2009-10	2010-11
Distance Ed. vs. Traditional Delivery																				
Distance Education																				
Retention Rate ¹	80.2%	83.6%	75.4%	75.9%	74.2%	75.6%	79.7%	73.5%	67.6%	72.9%	85.2%	87.3%	78.8%	78.5%	75.5%	76.6%	81.1%	73.4%	75.3%	73.4%
Success Rate ²	55.5%	58.5%	51.5%	53.1%	49.9%	48.8%	44.9%	44.6%	30.6%	28.4%	67.0%	70.7%	62.8%	60.7%	55.4%	46.5%	50.7%	45.0%	51.1%	50.9%
Traditional Delivery																				
Retention Rate	89.2%	90.0%	85.4%	84.9%	83.5%	87.2%	86.6%	82.9%	80.4%	79.3%	93.4%	94.2%	90.2%	88.3%	87.7%	87.6%	88.5%	83.6%	84.3%	82.6%
Success Rate	69.8%	70.4%	67.3%	67.3%	65.6%	61.6%	60.9%	59.7%	52.9%	53.1%	81.8%	83.1%	78.7%	77.6%	77.4%	65.3%	65.7%	63.2%	65.4%	63.1%

¹ Success rate numerator: Number of course enrollments with a successful passing grade (A,B,C,P/CR).

² Retention rate numerator: Number of course enrollments retained through the semester (grade = A,B,C,P/CR,D,F,NP/NC,I).

Success and Retention rate denominator: Number of enrollments retained (A,B,C,P/CR,D,F,NP/NC,I), withdrawn (W), and dropped (DR). Note: Beginning Summer 2008, DR grades are in the denominator, generally leading to a higher denominator and lower rate; DR assignment occurs when a student drops between census day and the last day to drop without receiving a W (30% date); DR grades did not exist before Summer 2008.

Figure 13: Retention & Success Rates for Students Enrolled at Bakersfield College by Delivery Mode

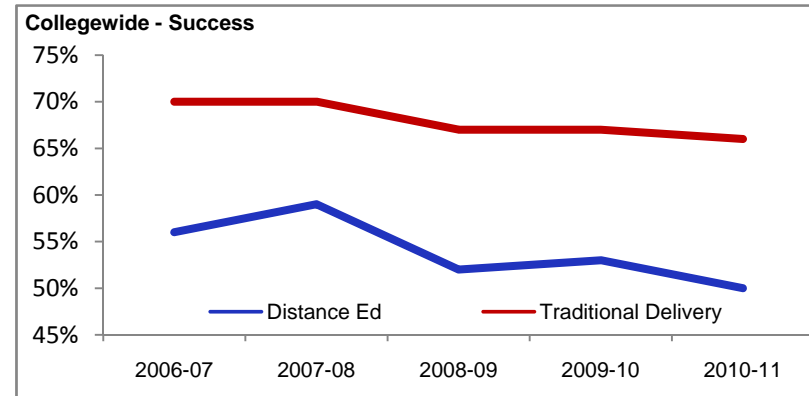
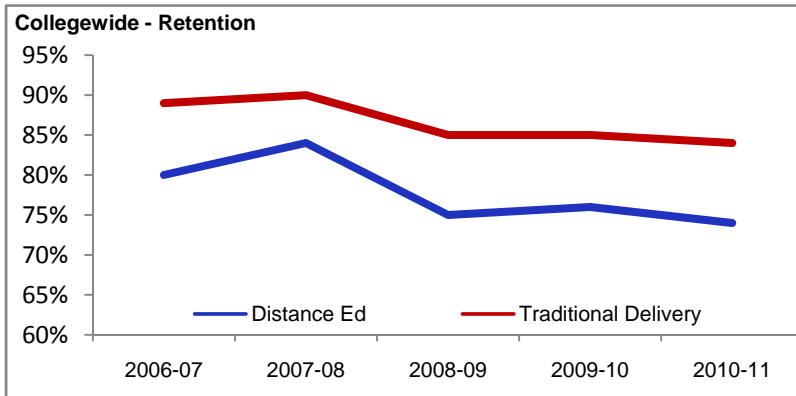


Table 18: Retention & Success Rates for Students Enrolled at Bakersfield College by Gender

	Collegewide					Basic Skills					CTE					Liberal Studies / Transfer				
	2006-07	2007-08	2008-09	2009-10	2010-11	2006-07	2007-08	2008-09	2009-10	2010-11	2006-07	2007-08	2008-09	2009-10	2010-11	2006-07	2007-08	2008-09	2009-10	2010-11
Gender																				
Female																				
Retention Rate ¹	88.4%	89.1%	83.4%	83.4%	82.1%	86.7%	86.4%	83.0%	80.4%	79.5%	91.8%	92.4%	86.7%	84.8%	83.6%	87.1%	88.0%	82.1%	83.5%	82.1%
Success Rate ²	69.0%	69.3%	65.1%	65.7%	64.0%	63.0%	62.3%	60.5%	53.1%	53.1%	79.5%	80.3%	74.7%	72.9%	71.5%	65.0%	65.4%	61.8%	65.5%	63.5%
Male																				
Retention Rate	88.3%	89.7%	85.2%	84.6%	83.4%	86.3%	85.6%	80.5%	77.4%	77.4%	92.9%	94.3%	90.3%	88.8%	88.7%	86.3%	87.8%	83.0%	83.7%	81.8%
Success Rate	67.7%	69.1%	65.9%	65.8%	64.5%	56.6%	55.6%	54.6%	47.3%	47.4%	80.1%	82.8%	77.9%	77.2%	77.4%	62.9%	63.4%	60.8%	63.1%	61.1%
Unknown																				
Retention Rate	90.8%	90.8%	92.9%	83.8%	83.1%	92.3%	100.0%	85.0%	73.7%	81.5%	94.7%	93.2%	97.6%	86.3%	82.4%	87.9%	87.0%	88.7%	82.6%	83.8%
Success Rate	75.4%	68.8%	74.8%	68.9%	62.1%	69.2%	64.5%	50.0%	42.1%	55.6%	89.5%	84.5%	89.0%	80.3%	73.5%	69.7%	58.0%	61.7%	59.3%	58.9%

¹ **Success rate numerator:** Number of course enrollments with a successful passing grade (A, B, C, P/CR).

² **Retention rate numerator:** Number of course enrollments retained through the semester (grade = A, B, C, P/CR, D, F, NP/NC, I).

Success and Retention rate denominator: Number of enrollments retained (A, B, C, P/CR, D, F, NP/NC, I), withdrawn (W), and dropped (DR). Note: Beginning Summer 2008, DR grades are in the denominator, generally leading to a higher denominator and lower rate; DR assignment occurs when a student drops between census day and the last day to drop without receiving a W (30% date); DR grades did not exist before Summer 2008.

Figure 14: Retention & Success Rates for Students Enrolled at Bakersfield College by Gender

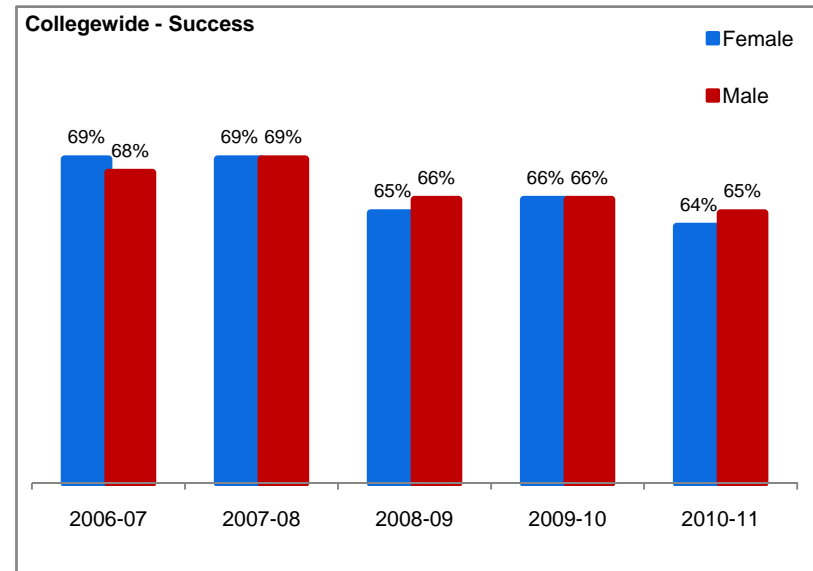
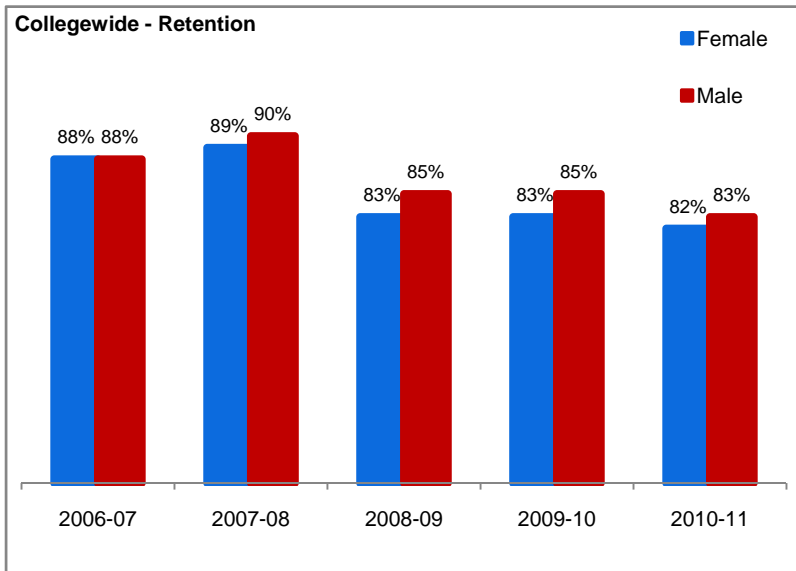


Table 19: Retention & Success Rates for Students Enrolled at Bakersfield College by Age

	Collegewide					Basic Skills					CTE					Liberal Studies / Transfer				
	2006-07	2007-08	2008-09	2009-10	2010-11	2006-07	2007-08	2008-09	2009-10	2010-11	2006-07	2007-08	2008-09	2009-10	2010-11	2006-07	2007-08	2008-09	2009-10	2010-11
Age																				
19 or Younger																				
Retention Rate ¹	88.0%	88.2%	85.0%	85.8%	84.6%	87.6%	86.0%	84.7%	82.5%	82.5%	88.0%	88.4%	85.0%	86.3%	84.9%	87.0%	87.4%	83.9%	85.9%	83.8%
Success Rate ²	61.9%	61.5%	60.8%	63.4%	62.2%	57.7%	55.8%	57.8%	51.6%	52.8%	62.3%	62.2%	61.1%	65.4%	64.0%	60.2%	59.7%	58.6%	64.4%	61.5%
20 - 24																				
Retention Rate	86.9%	89.0%	83.1%	82.1%	81.1%	84.7%	85.3%	80.5%	77.1%	77.0%	87.1%	89.2%	83.2%	82.7%	81.7%	85.8%	87.8%	81.1%	81.9%	80.4%
Success Rate	66.8%	69.0%	64.7%	63.7%	62.1%	58.4%	60.5%	56.2%	49.4%	49.3%	67.4%	69.5%	65.2%	65.3%	63.8%	64.5%	66.0%	61.3%	63.1%	61.3%
25 - 29																				
Retention Rate	89.3%	90.3%	83.7%	83.6%	81.2%	85.9%	87.9%	78.6%	77.1%	74.9%	89.5%	90.5%	84.0%	84.4%	82.1%	86.5%	87.7%	79.2%	80.6%	78.6%
Success Rate	74.5%	75.9%	69.5%	68.8%	66.0%	67.9%	66.4%	62.1%	53.1%	48.7%	75.0%	76.5%	69.9%	70.7%	68.4%	69.3%	71.3%	62.0%	64.4%	63.3%
30 - 39																				
Retention Rate	90.9%	91.2%	85.0%	83.5%	83.2%	85.5%	86.8%	81.1%	76.3%	75.7%	91.3%	91.5%	85.2%	84.4%	84.3%	88.0%	88.9%	80.6%	79.9%	79.8%
Success Rate	79.2%	78.3%	72.0%	70.7%	69.8%	66.0%	67.6%	62.3%	51.4%	51.1%	80.1%	79.1%	72.7%	73.2%	72.5%	74.2%	73.9%	65.1%	66.2%	65.8%
40 - 49																				
Retention Rate	91.1%	91.7%	84.9%	84.3%	82.6%	88.7%	86.3%	79.1%	76.1%	75.0%	91.3%	92.2%	85.4%	85.5%	84.0%	87.7%	89.6%	80.8%	80.3%	77.9%
Success Rate	80.9%	79.6%	72.8%	71.9%	69.6%	71.6%	63.6%	59.3%	48.0%	50.4%	81.6%	80.8%	74.1%	75.5%	73.0%	75.6%	75.3%	65.9%	67.6%	63.6%
50 or Older																				
Retention Rate	90.5%	93.1%	85.2%	86.1%	84.0%	88.9%	88.0%	79.2%	77.1%	78.5%	90.6%	93.4%	85.7%	87.2%	84.9%	85.8%	91.5%	76.0%	78.5%	77.5%
Success Rate	79.7%	83.9%	75.7%	76.4%	73.1%	66.2%	68.3%	59.9%	50.4%	51.5%	80.8%	84.8%	77.1%	79.6%	76.4%	73.2%	80.1%	63.2%	68.4%	65.8%

¹ **Success rate numerator:** Number of course enrollments with a successful passing grade (A, B, C, P/CR).

² **Retention rate numerator:** Number of course enrollments retained through the semester (grade = A, B, C, P/CR, D, F, NP/NC, I).

Success and Retention rate denominator: Number of enrollments retained (A, B, C, P/CR, D, F, NP/NC, I), withdrawn (W), and dropped (DR). Note: Beginning Summer 2008, DR grades are in the denominator, generally leading to a higher denominator and lower rate; DR assignment occurs when a student drops between census day and the last day to drop without receiving a W (30% date); DR grades did not exist before Summer 2008.

Table 20: Retention & Success Rates for Students Enrolled at Bakersfield College by Ethnicity

	Collegewide					Basic Skills					CTE					Liberal Studies / Transfer				
	2006-07	2007-08	2008-09	2009-10	2010-11	2006-07	2007-08	2008-09	2009-10	2010-11	2006-07	2007-08	2008-09	2009-10	2010-11	2006-07	2007-08	2008-09	2009-10	2010-11
Ethnicity																				
African American																				
Retention Rate ¹	84.6%	84.6%	77.5%	74.5%	72.4%	81.3%	77.4%	73.4%	66.2%	66.3%	89.3%	88.6%	82.0%	73.2%	72.7%	83.0%	83.9%	75.9%	77.5%	74.5%
Success Rate ²	57.3%	55.5%	50.5%	47.8%	45.4%	50.4%	44.5%	42.7%	32.9%	35.3%	68.2%	68.7%	61.8%	53.8%	52.3%	53.3%	50.5%	46.1%	48.6%	45.1%
American Indian																				
Retention Rate	89.2%	92.1%	80.6%	81.3%	81.2%	85.3%	88.4%	72.8%	64.0%	78.3%	94.2%	94.1%	85.8%	88.4%	85.2%	86.9%	91.0%	78.0%	79.3%	79.3%
Success Rate	70.5%	74.4%	63.6%	62.6%	60.2%	56.9%	76.7%	50.6%	36.0%	47.1%	83.1%	85.9%	73.4%	74.2%	73.3%	64.9%	65.4%	58.4%	59.3%	55.2%
Asian/Filipino/Pacific Islander																				
Retention Rate	90.3%	92.0%	87.4%	87.7%	86.7%	90.0%	89.6%	91.1%	86.5%	87.6%	93.5%	95.1%	90.6%	88.7%	86.8%	88.9%	91.0%	85.7%	87.4%	86.4%
Success Rate	73.8%	75.9%	72.9%	74.5%	73.5%	68.6%	73.0%	75.5%	62.5%	63.5%	84.2%	86.8%	81.3%	81.7%	78.6%	69.8%	71.6%	69.1%	73.8%	73.6%
Hispanic/Latino																				
Retention Rate	87.8%	89.0%	83.8%	84.1%	82.5%	87.1%	87.7%	83.0%	81.5%	80.9%	92.0%	93.1%	88.1%	87.0%	85.4%	86.3%	87.6%	82.2%	83.5%	81.7%
Success Rate	64.9%	66.6%	63.3%	64.1%	62.2%	60.4%	60.4%	58.9%	52.5%	53.0%	77.1%	79.7%	75.0%	73.8%	72.6%	60.9%	62.1%	59.3%	62.9%	60.5%
White																				
Retention Rate	89.3%	90.1%	85.8%	85.8%	85.3%	86.0%	85.5%	81.7%	79.3%	77.9%	92.8%	94.0%	89.8%	89.1%	89.9%	87.6%	88.3%	83.9%	84.7%	83.7%
Success Rate	73.4%	73.7%	70.4%	71.6%	71.2%	63.3%	61.8%	60.4%	54.0%	51.4%	83.0%	84.7%	79.9%	80.1%	81.1%	68.8%	68.6%	66.2%	69.1%	68.4%
Two or more races																				
Retention Rate	85.5%	88.8%	81.0%	82.5%	80.2%	87.5%	87.1%	80.4%	69.6%	72.3%	86.3%	89.4%	82.7%	85.2%	80.6%	85.5%	88.8%	80.7%	83.6%	81.3%
Success Rate	68.3%	68.2%	63.3%	63.7%	61.2%	70.8%	72.6%	63.0%	40.0%	44.6%	68.5%	71.4%	70.6%	71.6%	65.6%	67.9%	66.9%	61.5%	64.8%	62.2%
Unknown																				
Retention Rate	88.9%	90.2%	85.7%	82.6%	84.4%	90.2%	82.5%	77.8%	66.5%	56.8%	92.6%	93.8%	91.8%	88.4%	92.6%	86.4%	88.5%	81.6%	79.5%	70.6%
Success Rate	73.1%	72.4%	68.4%	65.2%	71.3%	66.1%	51.8%	50.0%	35.4%	13.6%	82.4%	82.0%	79.5%	78.3%	88.1%	67.6%	67.5%	61.2%	57.1%	42.6%

¹ Success rate numerator: Number of course enrollments with a successful passing grade A,B,C,P/CR).

² Retention rate numerator: Number of course enrollments retained through the semester (grade = A,B,C,P/CR,D,F,NP/NC,I).

Success and Retention rate denominator: Number of enrollments retained (A,B,C,P/CR,D,F,NP/NC,I), w ithdraw n (W), and dropped (DR). Note: Beginning Summer 2008, DR grades are in the denominator, generally leading to a higher denominator and lower rate; DR assignment occurs w hen a student drops between census day and the last day to drop without receiving a W (30% date); DR grades did not exist before Summer 2008.

Figure 15: Retention & Success Rates for Students Enrolled at Bakersfield College by Ethnicity

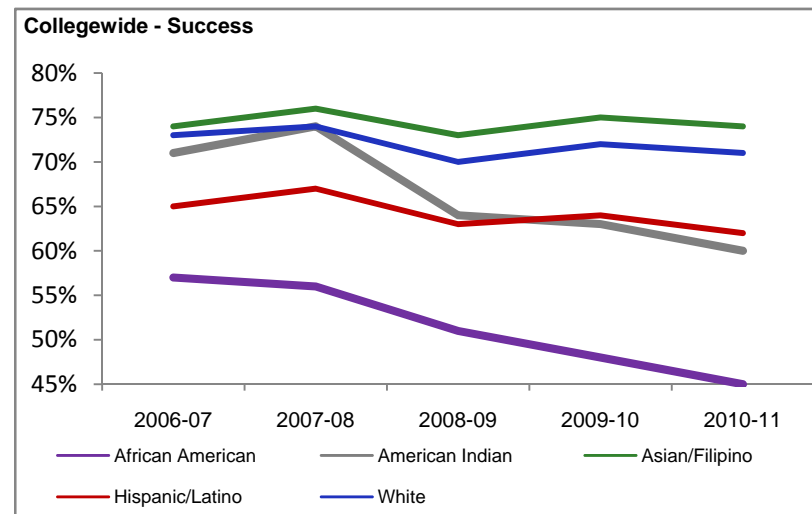
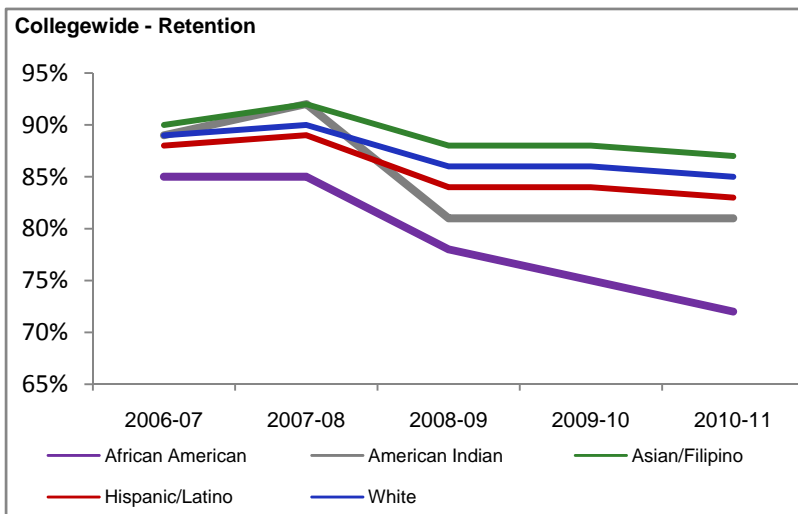


Table 21: Retention & Success Rates for Students Enrolled at Bakersfield College by Socio-Economic Status

	Collegewide					Basic Skills					CTE					Liberal Studies / Transfer				
	2006-07	2007-08	2008-09	2009-10	2010-11	2006-07	2007-08	2008-09	2009-10	2010-11	2006-07	2007-08	2008-09	2009-10	2010-11	2006-07	2007-08	2008-09	2009-10	2010-11
Socio-Economic Status¹																				
Awarded Financial Aid																				
Retention Rate ²	86.7%	87.7%	81.8%	81.3%	80.2%	85.8%	85.8%	81.5%	78.2%	77.9%	86.9%	88.0%	81.9%	81.9%	80.6%	85.3%	86.3%	80.1%	81.5%	79.8%
Success Rate ³	64.4%	64.9%	60.4%	60.1%	59.1%	59.8%	58.9%	56.2%	49.4%	49.4%	65.0%	65.6%	60.9%	62.0%	61.0%	61.3%	61.6%	57.1%	60.7%	58.9%
Not Awarded Financial Aid																				
Retention Rate	90.3%	91.3%	87.2%	88.3%	87.8%	88.5%	87.0%	83.8%	82.8%	82.1%	90.4%	91.5%	87.3%	88.7%	88.3%	88.1%	89.7%	84.2%	85.9%	84.7%
Success Rate	73.3%	74.3%	71.8%	75.0%	74.5%	63.1%	62.1%	64.4%	55.9%	57.5%	73.8%	74.9%	72.2%	76.5%	76.0%	68.5%	69.7%	65.4%	70.1%	68.8%

¹ Socio-Economic Status is based on a student's need for financial aid.

² **Success rate numerator:** Number of course enrollments with a successful passing grade A,B,C,P/CR).

³ **Retention rate numerator:** Number of course enrollments retained through the semester (grade = A,B,C,P/CR,D,F,NP/NC,I).

Success and Retention rate denominator: Number of enrollments retained (A,B,C,P/CR,D,F,NP/NC,I), w ithdraw n (W), and dropped (DR). Note: Beginning Summer 2008, DR grades are in the denominator, generally leading to a higher denominator and low er rate; DR assignment occurs w hen a student drops betw een census day and the last day to drop w ithout receiving a W (30% date); DR grades did not exist before Summer 2008.

Figure 16: Retention & Success Rates for Students Enrolled at Bakersfield College by Socio-Economic Status

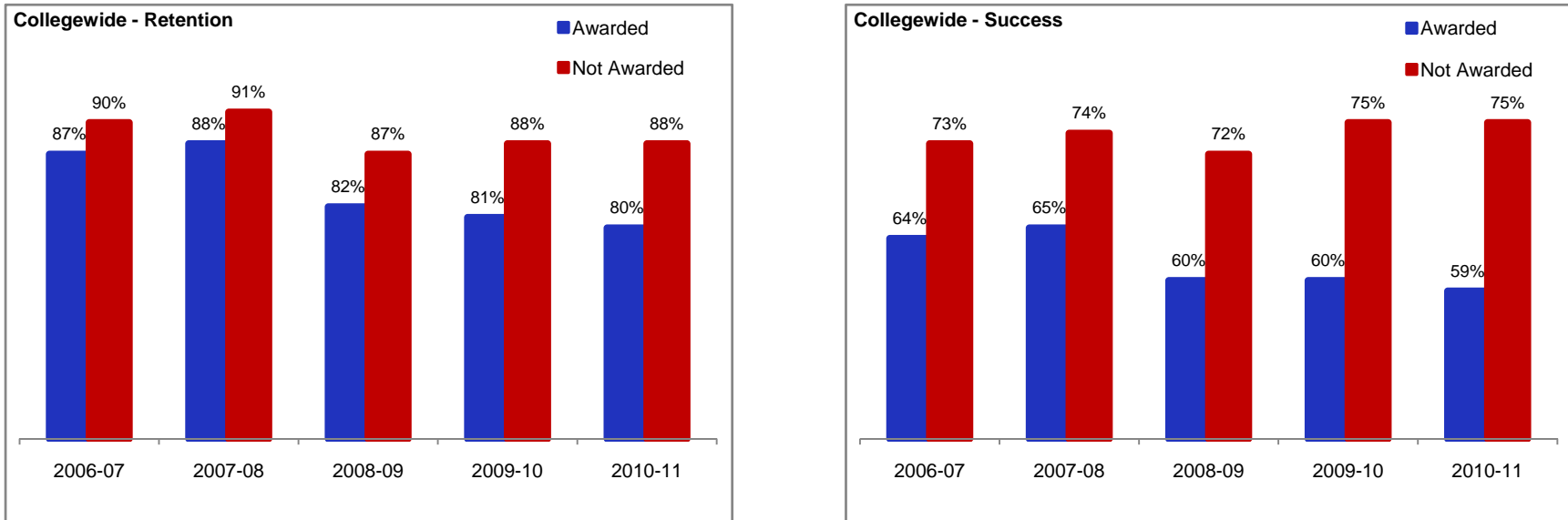


Table 22: Student Progression Through Basic Skills Courses Starting at the Lowest Level

English Course Sequence											
	ACDV B68 (Cohort) 3 Levels Below Transfer		ENGL B60 2 Levels Below Transfer		ENGL B1 1 Level Below Transfer		ENGL B1A <u>Transfer Level</u>		% of ACDVB68 Cohort to Successfully Complete Transfer English within 7 Terms		
	Enrolled # in Cohort	Successful # %	Enrolled # % of Cohort	Successful # %	Enrolled # % of Cohort	Successful # %	Enrolled # % of Cohort	Successful # %			
Cohort¹	224	175 78.1%	148 66.1%	77 52.0%	52 23.2%	27 51.9%	20 8.9%	16 80.0%	7.1%		

Math Course Sequence											
	ACDV B78 (Cohort) 4 Levels Below Transfer		MATH B50 3 Levels Below Transfer		MATH BA 2 Levels Below Transfer		MATH BD 1 Level Below Transfer		MATH B1A, B16, B2, B22, B23, BC or B6A <u>Transfer Level</u>		% of ACDVB78 Cohort to Successfully Complete Transfer Math within 7 Terms
	Enrolled # in Cohort	Successful # %	Enrolled # % of Cohort	Successful # %	Enrolled # % of Cohort	Successful # %	Enrolled # % of Cohort	Successful # %	Enrolled # % of Cohort	Successful # %	
Cohort¹	216	122 56.5%	79 36.6%	48 60.8%	41 19.0%	20 48.8%	16 7.4%	13 81.3%	1 0.5%	- 0.0%	0.0%

Reading Course Sequence											
	ACDV B91 (Cohort) 3 Levels Below Transfer		ACDV B62 2 Levels Below Transfer		ACDV B50 1 Level Below Transfer		Transfer Level Coursework¹		% of ACDVB91 Cohort to Successfully Complete Transfer Coursework¹ within 7 Terms		
	Enrolled # in Cohort	Successful # %	Enrolled # % of Cohort	Successful # %	Enrolled # % of Cohort	Successful # %	Enrolled # % of Cohort	Successful # %			
Cohort¹	126	90 71.4%	66 52.4%	56 84.8%	39 31.0%	30 76.9%	29 23.0%	22 75.9%	17.5%		

¹ Cohort: Students taking the low est level basic skills courses, in each area, during their first term at Bakersfield College.

Table 23: Student Progression Through Basic Skills Courses Starting at One Level Below Transfer Level

English Sequence								
	ENGL B1 (Cohort) 1 Level Below Transfer			ENGL B1A <u>Transfer</u> Level			% of ENGB1 Cohort to Successfully Complete Transfer English within 7 Terms	
	Enrolled # in Cohort	Successful # %		Enrolled # % of Cohort	Successful # %			
Cohort¹	288	105	36.5%	78	27.1%	57	73.1%	19.8%

Math Sequence								
	MATH BD (Cohort) 1 Level Below Transfer			MATH B1A, B16, B2, B22, B23, BC or B6A <u>Transfer</u> Level			% of MATHBD Cohort to Successfully Complete Transfer Math within 7 Terms	
	Enrolled # in Cohort	Successful # %		Enrolled # % of Cohort	Successful # %			
Cohort¹	264	105	39.8%	37	14.0%	21	56.8%	8.0%

Reading Sequence								
	ACDV B50 (Cohort) 1 Level Below Transfer			Transfer Level Coursework¹			% of ACDVB50 Cohort to Successfully Complete Transfer Coursework¹ within 7 Terms	
	Enrolled # in Cohort	Successful # %		Enrolled # % of Cohort	Successful # %			
Cohort¹	195	113	57.9%	98	50.3%	75	76.5%	38.5%

¹ **Cohort:** Students taking the low est level basic skills courses, in each area, during their first term at Bakersfield College.

Table 24: Awards & Certificates By Program

	2006-07			2007-08			2008-09			2009-10			2010-11		
	AA/AS	CA ¹	JSC ²	AA/AS	CA ¹	JSC ²	AA/AS	CA ¹	JSC ²	AA/AS	CA ¹	JSC ²	AA/AS	CA ¹	JSC ²
Agriculture															
Agriculture Business Management	3			2			5			7	1		2		
Animal Science	5			4	1		8	1		7	2		7	1	
Crop Science	1			2			2			3			2	1	
Environmental Horticulture	2	11		1			1						1	2	
Forestry	8	2		8	2		2			5	1		5	3	
Horticulture				1						1					
Veterinary Technician			7			4			4			3			17
Total	19	13	7	18	3	4	18	1	4	23	4	3	17	7	17
Allied Health															
Emergency Medical Technician															92
Nurse Assistant			49			47			99			83			101
Radiological Technology	17			20			15			22			15		
Registered Nursing	120			130			158			165			126		
Vocational Nursing		28			27			23			23			20	
Total	137	28	49	150	27	47	173	23	99	187	23	83	141	20	193
Business															
Accounting	20			22			22			18			12		
Administrative Office Assistant	2			1			3			4			5		
Bookkeeping		10			13			10			22			10	
Business Administration	62			73			65			60			74		
Business Communication			174			156			103			79			
General Business			25			22			18			36			23
General Management						2						3			
Marketing		1		1			4			7	2		1	2	
Office Assistant I		1	4		2	5			3		1	8		1	8
Office Assistant II		3			3			1			4			1	
Real Estate	2			3	2		3	3		1	3		3	2	
Retail Management-Supermarket											2				
Total	86	15	203	100	20	185	97	14	124	90	34	126	95	16	31

Table 24: Awards & Certificates By Program

	2006-07			2007-08			2008-09			2009-10			2010-11		
	AA/AS	CA ¹	JSC ²	AA/AS	CA ¹	JSC ²	AA/AS	CA ¹	JSC ²	AA/AS	CA ¹	JSC ²	AA/AS	CA ¹	JSC ²
Computer Studies															
Computer Information Systems	5			2			7			3			3		
Computer Science	2			2			2			5			2		
Geographic Info Systems			1			2						1			
Office Software Specialist			1												
Web Authoring-Design Emphasis							1			2			4		
Total	7		2	4		2	10			10		1	9		
Education/General Studies															
Liberal Arts/Science	252			243			231			165			132		
Liberal Studies/Liberal Arts										2					
Liberal Studies	101			79			85			83			77		
Physical Education	1			2			4			1			3		
Total	354			324			320			251			212		
Family & Consumer Education															
Child Development & Family Relations	66			45			57			46			33		
Child Development Assistant Teacher			63			97			99			66			72
Child Development Associate Teacher			59			89			82			65			55
Child Development Master Teacher: Infant/Todl		3									1	1		1	
Child Development Master Teacher: PreSchool		1				2			2						
Child Development Master Teacher: Special Ed		2			1	1			1					3	
Child Development Teacher		22			27			23			17			19	
Child Nutrition Management										1				1	
Culinary Arts	3	1		7	3		2	2		4	7		4	8	
Dietetic Services		2						3			1			1	
Food Service Management	1			2			2			1			1		
Total	70	31	122	54	31	189	61	28	184	52	26	132	38	33	127
Fine & Performing Arts															
Art	13			7			12			9			11		
Digital Arts: Computer Graphic Art	3			1						1					
Digital Arts	8	4		10	5		13	4		11	5		10	1	
Music	1			2			1			4			2		
Theatre Arts	1									1					
Total	26	4		20	5		26	4		26	5		23	1	

Table 24: Awards & Certificates By Program

	2006-07			2007-08			2008-09			2009-10			2010-11		
	AA/AS	CA ¹	JSC ²	AA/AS	CA ¹	JSC ²	AA/AS	CA ¹	JSC ²	AA/AS	CA ¹	JSC ²	AA/AS	CA ¹	JSC ²
Industrial Technology															
Apprenticeship - Carpentry		22			1			3							
Apprenticeship - Electrician		17			6			14			10				9
Apprenticeship - Operating Engineer		2						5							4
Apprenticeship - Sheetmetal		9			1					3					2
Automotive Tech: Brake & Wheel Alignment		1			11			2		5					6
Automotive Tech: Engine Overhaul		1			9				1	4					8
Automotive Tech: Power Train		1			9			1		5					4
Automotive Tech: Auto Tune-up		2			11			1		7					8
Automotive Tech: Basic Auto Maint & Service			8			1									
Automotive Tech: Indstrl Tech,Automotive Optn	1			2	1		4			4					
Construction Tech: Air Condit, Heating & Refrig			16			14						11			
Construction Tech: Building & Related Codes			35			42			25						
Construction Tech: Indstrl Tech,Construction Optn	1			1	2		2			1	2				
Construction Tech: Plumbing/Pipefitting		22			9			11			13				
Diesel & Farm Equipment			9			12			13						
Electronics Tech		7			5			1			1				14
Electronics Tech: Indstrl Tech,Electronics Optn	4			6	1		2	6			4			3	
Industrial Drawing: AutoCad			28			39			38			43			
Indstrl Tech,Industrial Drwg				2			1			3				2	
Industrial Drawing	1			1			2			1				2	
Industrial Tech, General														2	
Manufacturing Tech: Basic Mach Tool Op/Lathe, Mill						26			22			1			66
Manufacturing Tech: Computer Num Control Program												8			4
Manufacturing Tech: Control Systems Tech													1	1	
Manufacturing Tech: Indstrl Tech,Automtd Prod/Mfg	1						1								
Manufacturing Tech: Indultrl Tech,Mfg Tech					1								1	1	
Manufacturing Tech: Programmable Logic Controllers			37			2						1			
Production Maintenance			4						1			4			
Welding Tech: Blueprint Reading & Layout			4			6			3			13			7
Welding Tech: Gas/Tung/Flux Core Arc Welding			9			11			6			17			14
Welding Tech: Indstrl Tech,Welding Option				1	3		1			1	1			5	
Welding Tech: Shielded Metal Arc Welding			5			5			1			9			5
Woodworking Tech: Indstrl Tech,Wood/Cabinet	1												1		
Woodworking/Cabinetmaking						13						12			
Total	9	84	155	13	70	171	13	44	110	10	55	119	12	62	96

Table 24: Awards & Certificates By Program

	2006-07			2007-08			2008-09			2009-10			2010-11		
	AA/AS	CA ¹	JSC ²	AA/AS	CA ¹	JSC ²	AA/AS	CA ¹	JSC ²	AA/AS	CA ¹	JSC ²	AA/AS	CA ¹	JSC ²
Language/Communication															
American Sign Language	16			10			9			13			9		
Communication	15		113	24		106	21	83	14	21	99		32	20	
English	10			8			10			7			15		
Journalism	5		1	2			2		1	7			1		
Spanish	13			13			9			10			11		
Total	59		114	57		106	51	83	15	58	99		68	20	
Math & Science															
Architectural CAD			4			13			1			12			14
Architecture/Architectural Drafting	10			6			16			6			9		
Biology	13			11			15			11			19		
Biology, Emphasis Human	43			75			70			54			52		
Chemistry	1												2		
Engineering Technology	1									1					
Engineering, General	3			1			4			1			1		
Mathematics	8			6			4			8			6		
Physics										1			3		
Total	79		4	99		13	109		1	82		12	92		14
Public Safety															
Administration of Justice	14			6			5								
Correctional Administration	4			6			6			2			2		
Fire Technology	15	9		24	28		14	36		22	4		16	9	
Total	33	9		36	28		25	36		24	4		18	9	
Social/Behavioral Sciences															
Anthropology	4			6			4			2			10		
Chicano Studies	3						2			1			4		
Criminal Justice	13			15		3	17		2	29		3	41		
Economics	2			3			7			5			2		
History	22			20			16			16			28		
Human Services	34		9	17		4	30		12	28		4	26		8
Philosophy	5			9			1			3			4		
Political Science	3			4			6			5			5		
Political Science, Domestic Policy				1			1			1			1		
Political Science, International Relations	3						1			2			1		
Psychology	34			56			42			52			57		
Sociology	9			22			6			12			15		
Total	132		9	153		7	133		14	156		7	194		8

Table 24: Awards & Certificates By Program

	2006-07			2007-08			2008-09			2009-10			2010-11		
	AA/AS	CA ¹	JSC ²	AA/AS	CA ¹	JSC ²	AA/AS	CA ¹	JSC ²	AA/AS	CA ¹	JSC ²	AA/AS	CA ¹	JSC ²
Total CTE Awards ³	328	171	538	339	151	598	372	110	521	372	142	464	312	138	464
Total Liberal Studies/Transfer Awards ⁴	683	13	127	689	33	126	664	123	30	597	108	19	607	30	22
Total Collegewide Awards	1,011	184	665	1,028	184	724	1,036	233	551	969	250	483	919	168	486

¹ CA: Certificate of Achievement

² JSC: Job Skills Certificate

³ CTE Awards: Agriculture, Allied Health, Business, Computer Studies, Family & Consumer Education, and Industrial Technology

⁴ Liberal Studies/Transfer Awards: Education/General Studies, Fine & Performing Arts, Language/Communication, Math & Science, Public Safety, and Social/Behavioral Sciences

Table 25: Transfers

	2006-07	2007-08	2008-09	2009-10	2010-11
Total Number of Students who Transferred to a 4-year Institution in California ¹	882	881	805	794	762

¹ Source: Data was extracted from the California Postsecondary Education Commission (CPEC) website for all years available; 2006-07, 2007-08, 2008-09, 2009-10, 2010. For 2010-11, CPEC data was not available so data was extracted from the California State University website and does not include students who may have transferred to a University of California institution.

ACCJC Student Achievement Data: Graduate Data



Bakersfield
COLLEGE



Table 26: Licensure Certification/Exam Pass Rates

	2006		2007		2008		2009		2010	
	# Taken	% Pass	# Taken	% Pass	# Taken	% Pass	# Taken	% Pass	# Taken	% Pass
CA Board of Registered Nursing NCLEX Exam	95	90%	122	91%	152	88%	157	93%	125	88%
CA Board of Vocational Nursing BVNPT Licensure Exam	21	81%	1	100%	26	92%	24	80%	28	86%
American Registry of Radiologic Technologists (AART) Certification Exam	21	100%	18	100%	19	100%	15	100%	21	100%